



SRI VENKATESWARA COLLEGE OF ENGINEERING & TECHNOLOGY

ISO 9001:2015 Certified

Approved by AICTE, New Delhi, Affiliated to JNTUGV, Vizianagaram

Office : +91 9705576693 , email: principal_svcet@yahoo.com, website: www.svcet.info

4.1.1. Availability of Adequate infrastructure and physical facilities viz..classrooms, laboratories, ICT infrastructure, facilities for cultural and sports activities, gymnasium, yoga centre etc. in the institution.

Sri Venkateswara College of Engineering and Technology has a beautiful landscape, aesthetic architecture, eco-friendly environment, spacious classrooms, well-equipped laboratories, and good infrastructure spread over 10.19 acres. Hence, we constantly endeavor to provide the best quality education by student centered teaching, learning and training process, to equip the institute with latest cuttingedge technology labs comparable to the best in the industry.

Classrooms: The College has 23 classrooms and 07 tutorial rooms with measurements of 66 Sqm and 33 Sqm approximately. Each room can accommodate seventy students. The e-class rooms are equipped with ceiling-mounted LCD projectors and Screens to facilitate innovative learning with ICT tools.

Laboratories: The Institution has domain-centric laboratories as per the regulations of AICTE and APSCHE norms. Adequate and well-maintained equipment to conduct experiments is provided.

English Communication Lab: To cater needs of communication skills for students. SVCET has English Communication Lab located in Academic Block. Lab consists of audio-visual facilities, 30 computers with headphones and centralized A.C.

Seminar Halls: The college has well-furnished seminar hall and one conference hall in the academic block to conduct seminars, conferences, guest lectures, and workshops for students and faculty. Seminar hall is equipped with LCD projector, LCD screen, white board and public addressing system.

Auditorium: SVCET has well illuminated and furnished auditorium with a capacity of 500 Persons. The auditorium is having centralized AC, good quality sound system and over head LCD Projector & screen and white board. It has spacious dais and podium to accommodate 10 to 20 Persons comprising VIPs / resource persons/ any invited guests etc. The auditorium is used during conduction of Workshops/ conferences/ students tech fests/ symposium/any cultural events.

Library: The Institution recognizes the importance of the library as a good learning resource. The library equipped with good collection of books & journals. The central library has a floor area of 460 Sqm. with a reading space of 290Sq.Mt. The timings are from 8:00 AM to 7 PM.

Training and Placement Cell: The T&P Cell involves the placement of students through various training modules. It also plays an active role in conducting PPT Programs and Soft Skill Sessions for students.

Transport Facility: The institute provides transport facilities for the students and staff to reach the campus from the city.

Sports Facilities: SVCET has got a spacious play ground for outdoor games i.e., Cricket, Volley ball, badminton & Kho-kho etc. Students practice and play indoor sports such as table tennis, chess, caroms etc. inside the campus.

Cultural Activities: Cultural Activities: Our Institution has facilities such as Indoor auditorium, open air auditorium and seminar hall to conduct cultural events to inculcate the creativity, diversity and artistic quality among the students as the part of society's development.

Hostel Facilities: The Institute provides Excellent Hostel Facilities for both boys and girls separately. The rooms are spacious and proper ventilated. The campus Hostels are equipped with Wi-Fi. Each hostel is provided with independent dining area and common rooms, TV hall, etc. Free transport facility is provided to students to reach college during weekdays. Ambulance facility is available 24X7 for the better service.

Cafeteria: A Cafeteria with delicious food items, snacks and soft drinks is available to students in campus.

Wi-Fi facility: Wi-fi facility is provided to staff and students to enrich their knowledge.

Gym and fitness center: SVCET believes the importance of fitness for overall growth of a person. Accordingly SVC management has allocated us a dedicated fitness center for boys and girls separately. Gym houses modern equipment like Thread mill to conventional equipment /tools like dumbbells, weight lifting along with weights, cycles, kid bag etc.

ATM facility: SVCET operates an ATM in support from Bank of India. The ATM is located at an accessible place and is very Near to SVCET.

Medical center cum Dispensary & Pharmacy:

SVCET is housing medical center / OP dispensary in coordination with Public Health Center (Etcherla). The center operates primarily for first aid and for health consultation provided by visiting Doctors. Doctors specialized in the areas of Physicians, Gynecologists and specialized doctors visit College periodically.

Yoga centre:

Yoga and meditation are techniques to create stress relief for students. SVCET has an yoga

center to house nearly 50 students. Yoga camp is organized periodically for the benefit of students. Popular yoga guru's from Sri Sri Sri Ravi Shankar Yoga foundation visiting college time to time and spread the importance of yoga and meditation.

Overall, the institution has a strong commitment to providing the best infrastructure and physical facilities to facilitate quality education and academic development for its students and staff.



PRINCIPAL

PRINCIPAL

Sri Venkateswara College of Engineering & Technology
ETCHERLA, Srikakulam-532410 (A.P)



SRI VENKATESWARA COLLEGE OF ENGINEERING & TECHNOLOGY

ISO 9001:2015 Certified

Approved by AICTE, New Delhi, Affiliated to JNTUGV, Vizianagaram

Office : +91 9705576693 , email: principal_svcet@yahoo.com, website: www.svcet.info

Building Block Details

S.No	Building/Block Name	No. of Floors
1	BLOCK A	3
2	BLOCK B	4
3	BLOCK C	3

Administrative Area Details

Particulars	No. of Rooms	Total Area (Sq.Mt.)	ICT facilities available
Chair Person/Secretary Room	1	30	Lan and wifi
Principal Room	1	30	Lan and wifi
Board Room	1	20	Lan and wifi
Office Room	1	300	Lan and wifi
Department Office	7	140	Lan and wifi
Head of Department	7	70	Lan and wifi
Faculty Rooms	96	480	Lan and wifi
Central Stores	1	32	Lan and wifi
Maintenance	1	15	Lan and wifi
Security	1	15	wifi
House Keeping	1	10	wifi
Pantry	1	150	wifi
Examination Control Office	1	40	Lan and wifi
Placement Office	1	30	Lan and wifi
IQAC Rooms	1	20	Lan and wifi

PRINCIPAL
Sri Venkateswara College of Engineering & Technology
ETCHERLA, Srikakulam-532410 (A.P)



SRI VENKATESWARA COLLEGE OF ENGINEERING & TECHNOLOGY

ISO 9001:2015 Certified

Approved by AICTE, New Delhi, Affiliated to JNTUGV, Vizianagaram

Office : +91 9705576693 , email: principal_svcet@yahoo.com, website: www.svcet.info

Instructional Area (class rooms, tutorial etc)

S.No	Particulars	Block details	Level/floor	Room Number	Total carpet area (sq.m)	ICT facilities available
1	Class Rooms	BLOCK A	1	1	66	wifi
2	Class Rooms	BLOCK A	2	1	66	wifi
3	Class Rooms	BLOCK A	2	2	66	wifi
4	Class Rooms	BLOCK A	3	1	66	wifi
5	Class Rooms	BLOCK A	3	2	66	wifi
6	Class Rooms	BLOCK A	3	3	66	wifi
7	Class Rooms	BLOCK A	3	4	66	wifi
8	Class Rooms	BLOCK A	3	5	66	wifi
9	Class Rooms	BLOCK A	3	6	66	wifi
10	Class Rooms	BLOCK B	1	1	66	wifi
11	Class Rooms	BLOCK B	1	2	66	wifi
12	Class Rooms	BLOCK B	3	1	66	wifi
13	Class Rooms	BLOCK B	3	2	66	wifi
14	Class Rooms	BLOCK B	3	3	66	wifi
15	Class Rooms	BLOCK B	4	1	66	wifi
16	Class Rooms	BLOCK B	4	2	66	wifi
17	Class Rooms	BLOCK B	4	3	66	wifi
18	Class Rooms	BLOCK B	4	4	66	wifi
19	Class Rooms	BLOCK B	4	5	66	wifi
20	Class Rooms	BLOCK B	4	6	66	wifi
21	Class Rooms	BLOCK C	1	1	66	wifi
22	Class Rooms	BLOCK C	1	2	66	wifi
23	Class Rooms	BLOCK C	3	1	66	wifi
24	Class Rooms	BLOCK C	3	13	66	wifi

66
Sri Venkateswara College of Engineering & Technology
ETCHERLA, Srikakulam-532410 (A.P.)



SRI VENKATESWARA COLLEGE OF ENGINEERING & TECHNOLOGY

ISO 9001:2015 Certified

Approved by AICTE, New Delhi, Affiliated to JNTUGV, Vizianagaram

Office : +91 9705576693 , email: principal_svcet@yahoo.com, website: www.svcet.info

25	Class Rooms	BLOCK C	3	14	66	wifi
26	Class Rooms	BLOCK C	3	2	66	wifi
27	Class Rooms	BLOCK C	3	3	66	wifi
28	Class Rooms	BLOCK C	3	4	66	wifi
29	Computer Centre	BLOCK B	2	2	149.6	Lan and Wifi
30	Drawing Hall	BLOCK A	3	1	149.6	Wifi
31	Drawing Hall	BLOCK C	2	1	149.6	Wifi
32	Language Laboratory	BLOCK A	2	3	92.4	Lan and Wifi
33	Library	BLOCK B	2	1	419.44	Lan and Wifi
34	Seminar Hall	BLOCK A	2	1	149.6	Lan and Wifi
35	Auditorium Hall	BLOCK C	1	1	250	Lan and Wifi
36	Tutorial Rooms	BLOCK A	3	7	33	Wifi
37	Tutorial Rooms	BLOCK A	3	8	33	Wifi
38	Tutorial Rooms	BLOCK A	3	9	33	Wifi
39	Tutorial Rooms	BLOCK C	3	10	33	Wifi
40	Tutorial Rooms	BLOCK C	3	11	33	Wifi
41	Tutorial Rooms	BLOCK C	3	12	33	Wifi
42	Tutorial Rooms	BLOCK C	3	5	33	Wifi
43	Tutorial Rooms	BLOCK C	3	6	33	Wifi
44	Tutorial Rooms	BLOCK C	3	7	33	Wifi
45	Tutorial Rooms	BLOCK C	3	8	33	Wifi
46	Tutorial Rooms	BLOCK C	3	9	33	Wifi

4
PRINCIPAL
Sri Venkateswara College of Engineering & Technology
ETCHERLA, Srikakulam-532410 (A.P.)



SRI VENKATESWARA COLLEGE OF ENGINEERING & TECHNOLOGY

ISO 9001:2015 Certified

Approved by AICTE, New Delhi, Affiliated to JNTUGV, Vizianagaram

Office : +91 9705576693 , email: principal_svcet@yahoo.com, website: www.svcet.info

Instructional area (labs)

S.No	Lab Type	Lab Name	Building/Block Name	Level/Floor No.	Room no.	Measurements of room (in Sq.mts.)				ICT facilities available
						Length	Breadth	Height	Area in sq.mts.	
1	Laboratory (other than First Year)	TRANSPORTATION ENGINEERING LAB	BLOCK A	1	3	10	7	3.05	70	wifi
2	Laboratory for Post Graduate courses	BCSS LAB	BLOCK A	2	5	19.38	4	3.65	77.52	wifi
3	Laboratory (other than First Year)	SURVEYING LAB	BLOCK A	1	4	10	7	3.05	70	wifi
4	Laboratory (other than First Year)	ENGINEERING WORKSHOP	BLOCK A	1	7	20	10	3.03	200	wifi
5	Laboratory (other than First Year)	ENVIRONMENTAL ENGINEERING LAB	BLOCK A	1	8	15.5	10	3.05	155	wifi
6	Laboratory (other than First Year)	CONCRETE LAB	BLOCK A	1	2	10	7	3.05	70	wifi
7	Laboratory (other than First Year)	GEOLOGY LAB	BLOCK A	1	5	10	7	2.69	70	wifi
8	Laboratory (other than First Year)	SOM LAB	BLOCK A	1	5	10	7	2.69	70	wifi
9	Laboratory (other than First Year)	GTE	BLOCK A	1	1	10	7	3.05	70	wifi
10	Laboratory (other than First Year)	HEAT TRANSFER LAB	BLOCK A	1	8	10	9	3.2	90	wifi
11	Laboratory (other than First Year)	PRODUCTION TECHNOLOGY	BLOCK A	1	6	10	7	3.05	70	wifi
12	Laboratory (other than First Year)	PDC LAB	BLOCK A	1	1	9.44	8.83	3.05	83.36	wifi

PRINCIPAL
Sri Venkateswara College of Engineering & Technology
ETCHERLA, Srikulam-532410 (A.P)



SRI VENKATESWARA COLLEGE OF ENGINEERING & TECHNOLOGY

ISO 9001:2015 Certified

Approved by AICTE, New Delhi, Affiliated to JNTUGV, Vizianagaram

Office : +91 9705576693 , email: principal_svce@yahoo.com, website: www.svceet.info

13	Laboratory (For First Year)	ENGINEERING PHYSICS LAB	BLOCK A	1	4	10	9	3.05	90	wifi
14	Laboratory (For First Year)	ENGLISH LAB	BLOCK A	2	5	19.38	4	3.05	77.52	Lan and wifi
15	Laboratory (other than First Year)	Electrical Circuits lab	BLOCK B	1	5	10.2	8.87	3.9	90.47	wifi
16	Laboratory (For First Year)	ELECTRICAL WORK SHOP	BLOCK B	1	9	20	10	3.9	200	wifi
17	Laboratory (other than First Year)	AC/DC LAB	BLOCK B	3	32	10	8	3.9	80	wifi
18	Laboratory (other than First Year)	CONTROL SYSTEMS	BLOCK B	3	19	10	7	3.87	70	Utilized
19	Laboratory (other than First Year)	CP Lab-2	BLOCK B	1	102	16.22	10	3.9	162.2	Utilized
20	Laboratory (other than First Year)	DSP	BLOCK B	2	19	9.44	8.83	3.9	83.36	wifi
21	Laboratory (other than First Year)	EDC LAB	BLOCK B	3	31	9.44	8.83	3.9	83.36	wifi
22	Laboratory (For First Year)	CP Lab-1	BLOCK B	1	101	16.22	10	3.9	162.2	Lan and wifi
23	Laboratory (other than First Year)	Electrical machines (AC) lab	BLOCK B	1	3	11.43	8.87	3.9	101.38	wifi
24	Laboratory (other than First Year)	Electrical Machines (DC) lab	BLOCK B	1	4	11.43	9	3.9	102.87	wifi
25	Laboratory (other than First Year)	Electrical measurements	BLOCK B	1	6	9	8.8	3.9	79.2	wifi
26	Laboratory (other than First Year)	FULID MECHANICS AND HYDRAULIC MACHINERY	BLOCK B	1	9	9.936	8.65	3.13	85.95	wifi

PRINCIPAL
Sri Venkateswara College of Engineering & Technology
ETCHERLA, Srikakulam-532410 (A.P.)



SRI VENKATESWARA COLLEGE OF ENGINEERING & TECHNOLOGY

ISO 9001:2015 Certified

Approved by AICTE, New Delhi, Affiliated to JNTUGV, Vizianagaram

Office : +91 9705576693 , email: principal_svcet@yahoo.com, website: www.svcet.info

27	Laboratory (other than First Year)	MWE LAB	BLOCK B	3	31	9.44	8.83	3.9	83.36	wifi
28	Laboratory (other than First Year)	Power Electronics Lab	BLOCK B	3	20	10	8.95	3.9	89.5	wifi
29	Laboratory (other than First Year)	POWER SYSTEMS	BLOCK B	1	8	8.8	8	3.9	70.4	wifi
30	Laboratory (other than First Year)	VLSI	BLOCK B	2	18	9.44	8.83	3.9	83.36	wifi
31	Laboratory for Post Graduate courses	ADVANCED CONTROL SYSTEMS LABORATORY	BLOCK B	3	21	10	7	3.9	70	wifi
32	Laboratory for Post Graduate courses	IT LAB 1	BLOCK B	1	1	16.4	8.87	3.9	145.47	Utilized
33	Laboratory for Post Graduate courses	ITLAB2	BLOCK B	1	1	16.4	8.87	3.9	145.47	Lan and wifi
34	Laboratory for Post Graduate courses	POWER CONVERTERS AND DRIVES	BLOCK B	3	22	8.95	10	3.9	89.5	Lan and wifi
35	Laboratory (other than First Year)	GIS CAD LAB	BLOCK C	2	3	12	7.2	3.87	86.4	Lan and wifi
36	Laboratory (other than First Year)	Electrical Simulation Lab	BLOCK C	2	11	10	7	3.87	70	wifi
37	Laboratory (other than First Year)	THEORY OF MACHINES LAB	BLOCK C	3	6	11	7	3.8	77	wifi
38	Laboratory (other than First Year)	CP lab-3	BLOCK C	1	3	16.4	8.6	3.6	141.04	Lan and wifi
39	Laboratory for Post Graduate courses	THERMAL ENGINEERING LAB	BLOCK C	1	2	10.82	9.753	3.87	105.53	wifi
40	Laboratory for Post Graduate courses	SIMULATION (M.Tech)LAB	BLOCK C	2	10	9.57	8.96	3.87	85.75	wifi
41	Laboratory (other than First Year)	METALLURGY	BLOCK C	2	3	12	6	3.8	72	wifi

PRINCIPAL
Sri Venkateswara College of Engineering & Technology
ETCHEMA, Srikakulam-532410 (A.P.)



SRI VENKATESWARA COLLEGE OF ENGINEERING & TECHNOLOGY

ISO 9001:2015 Certified

Approved by AICTE, New Delhi, Affiliated to JNTUGV, Vizianagaram

Office : +91 9705576693 , email: principal_svcet@yahoo.com, website: www.svcet.info

42	Laboratory (other than First Year)	METROLOGY AND INSTRUMENTATION	BLOCK C	1	5	12	6	3.8	72	wifi
43	Laboratory (other than First Year)	MPMC LAB-2	BLOCK C	1	2	10.83	10	3.9	108.3	wifi
44	Laboratory (For First Year)	ENGINEERING CHEMISTRY LAB	BLOCK C	1	3	9.57	8.96	3.65	85.75	wifi
45	Laboratory (other than First Year)	MECHANICS OF SOLID LAB	BLOCK C	1	8	10	10	3.87	100	wifi
46	Laboratory for Post Graduate courses	CAD CAM LAB	BLOCK C	2	4	12	7.2	3.87	86.4	Lan and wifi
47	Laboratory for Post Graduate courses	CP Lab-4	BLOCK C	1	3	16.8	8.75	3.9	147	Lan and wifi
48	Laboratory (other than First Year)	MACHINE TOOL LABS	BLOCK C	1	7	14.32	10	3.87	143.2	wifi

4

PRINCIPAL
Sri Venkateswara College of Engineering & Technology
ETCHERLA, Srikakulam-532410 (A.P)



**SRI VENKATESWARA
COLLEGE OF ENGINEERING & TECHNOLOGY**

ISO 9001:2015 Certified

Approved by AICTE, New Delhi, Affiliated to JNTUGV, Vizianagaram

Office : +91 9705576693 , email: principal_svcet@yahoo.com, website: www.svcet.info

ACADEMIC AND PHYSICAL FACILITIES



SRI VENKATESWARA COLLEGE OF ENGINEERING & TECHNOLOGY

ISO 9001:2015 Certified

Approved by AICTE, New Delhi, Affiliated to JNTUGV, Vizianagaram
Office : +91 9705576693 , email: principal_svcet@yahoo.com, website: www.svcet.info

SITE PLAN

జిల్లా :
DISTRICT : SRIKAKULAM
మండలము :
MANDAL : ETCHERLA

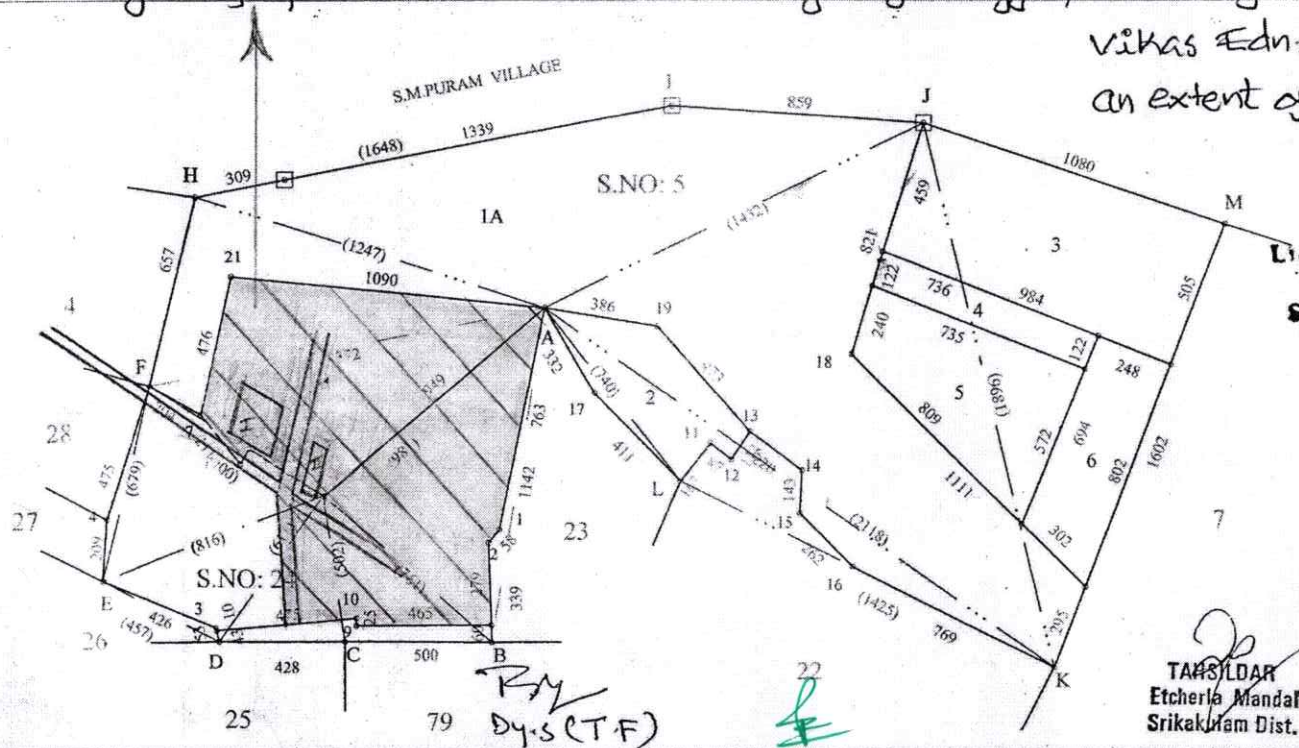
ఫీల్డ్ నెంబరు : 24 AND 5
(FIELD NUMBER)

VILLAGE NAME : **ETCHERLA**

విస్తీర్ణం : హెక్టార్లు	3	వీర్లు	74	చ.మి. 37393.01
AREA : HECTARES	-	ARES	-	Sq.Mts.
ఎకరములు	9	సెంటు	24	
ACRES	-	CENTS		

SITE PLAN

Land belongs to proposed Sri Venkateswara College of Engg. & Tech., of
Vikas Edn. Society
an extent of AC. 10.19



METTA POLINAIDU
Licence: Sarvaud No. 5449
(Srikalahasti Municipality)
SANAPPAVANIPETA,
SRIRANGHAM-2

19	168	347				498	10
		A				297	Line
		J			5	58	
		1896				296	
18	425	1193				G	
		K				679	
		A			4	37	
		740				206	
						E	
17	43	410				457	
		L				32	38
		K				D	
		1425				B	
		654	Line	16		1142	
15	83	412				811	65
14	215	354				761	35
13	253	138				A	

TANJILDAR
Etcherla Mandal
Srikakulam Dist.

పరీక్ష చేసిన వారి సంతకం

PRINCIPAL
Sri Venkateswara College of Engineering & Technology
ETCHERLA, Srikakulam-532410 (A.P)

Digital Sketch Generated by Bha



**SRI VENKATESWARA
COLLEGE OF ENGINEERING & TECHNOLOGY**

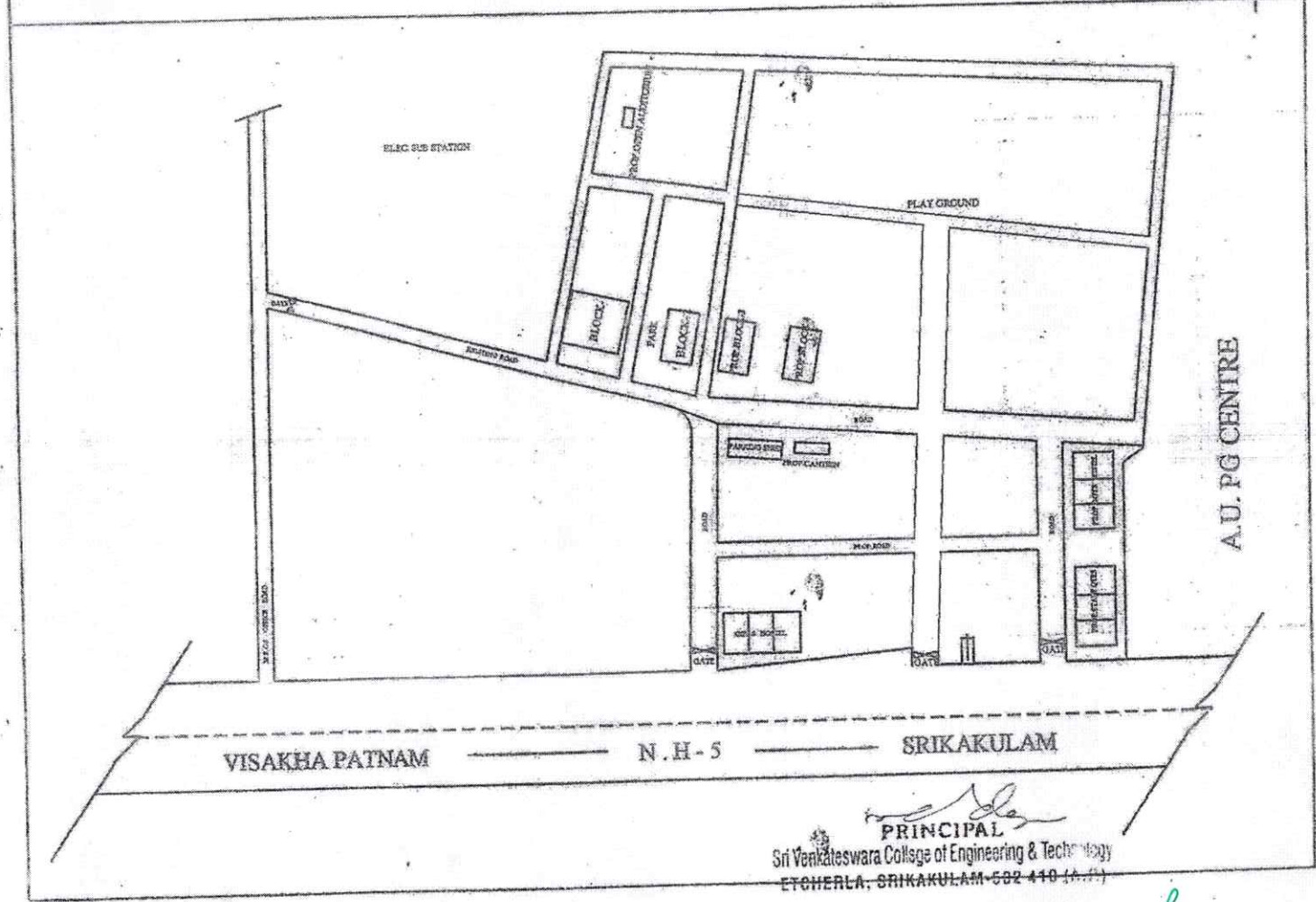
ISO 9001:2015 Certified

Approved by AICTE, New Delhi, Affiliated to JNTUGV, Vizianagaram

Office : +91 9705576693 , email: principal_svcet@yahoo.com, website: www.svcet.info

MASTER PLAN OF CAMPUS

MASTER PLAN OF THE CAMPUS OF SRI VENKATESWARA COLLEGE OF ENG.& TECH.
ETCHERLA, SRIKAKULAM



[Signature]
PRINCIPAL
Sri Venkateswara College of Engineering & Technology
ETCHERLA, SRIKAKULAM-532 410 (A.P.)

[Signature]
PRINCIPAL
Sri Venkateswara College of Engineering & Technology
ETCHERLA, Srikakulam-532410 (A.P)



SRI VENKATESWARA COLLEGE OF ENGINEERING & TECHNOLOGY

ISO 9001:2015 Certified

Approved by AICTE, New Delhi, Affiliated to JNTUGV, Vizianagaram

Office : +91 9705576693 , email: principal_svcet@yahoo.com, website: www.svcet.info



CAMPUS GARDENS



PRINCIPAL

Sri Venkateswara College of Engineering & Technology
ETCHERLA, Srikakulam-532410 (A.P)



**SRI VENKATESWARA
COLLEGE OF ENGINEERING & TECHNOLOGY**

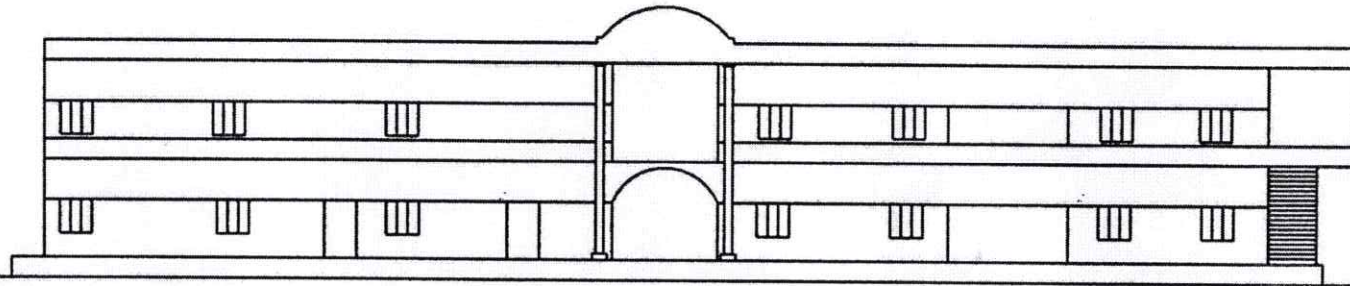
ISO 9001:2015 Certified

Approved by AICTE, New Delhi, Affiliated to JNTUGV, Vizianagaram

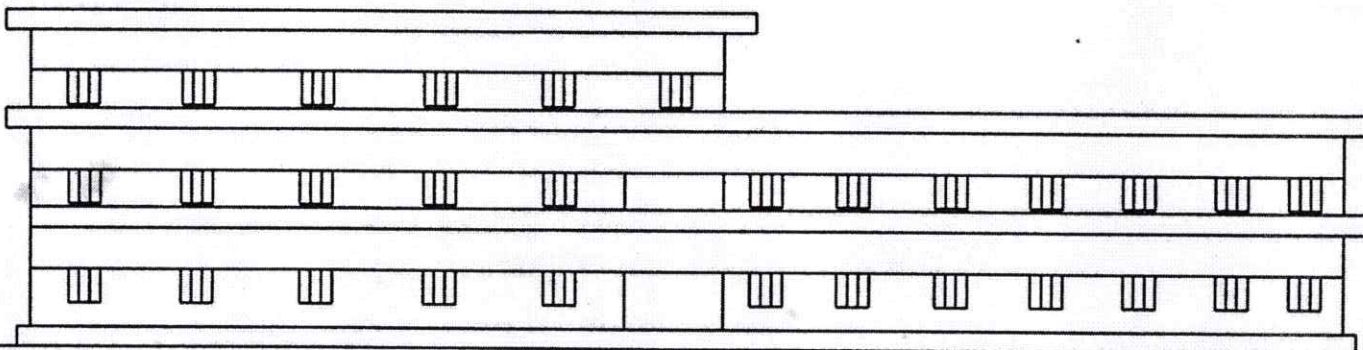
Office : +91 9705576693 , email: principal_svcet@yahoo.com, website: www.svcet.info

**ELEVATION OF
BLOCK-A(BLOCK-1)
&
BLOCK-B(BLOCK-2)**

**SRI VENKATESWARA COLLEGE OF ENGINEERING AND TECHNOLOGY
ETCHERLA, SRIKAKULAM**



ELEVATION OF BLOCK-1



ELEVATION OF BLOCK-2

B. Sankar
Secretary | Correspondent
VIKAS EDUCATIONAL SOCIETY
ETCHERLA-532 402
Srikakulam (A.P.)

[Signature]
PRINCIPAL
Sri Venkateswara College of Engineering & Technology
ETCHERLA, Srikakulam-532410 (A.P)

[Signature] **R.K.L. PRASAD,**
B.E., CIV., FIV.,
Chartered Engineer &
Approved Valuer
Opp. Old -nt Office
ILLURAM,
SRIKAKULAM-532001.



**SRI VENKATESWARA
COLLEGE OF ENGINEERING & TECHNOLOGY**

ISO 9001:2015 Certified

Approved by AICTE, New Delhi, Affiliated to JNTUGV, Vizianagaram

Office : +91 9705576693 , email: principal_svcet@yahoo.com, website: www.svcet.info

PLAN OF BLOCK-A



SRI VENKATESWARA COLLEGE OF ENGINEERING & TECHNOLOGY

ISO 9001:2015 Certified

Approved by AICTE, New Delhi, Affiliated to JNTUGV, Vizianagaram

Office : +91 9705576693 , email: principal_svcet@yahoo.com, website: www.svcet.info



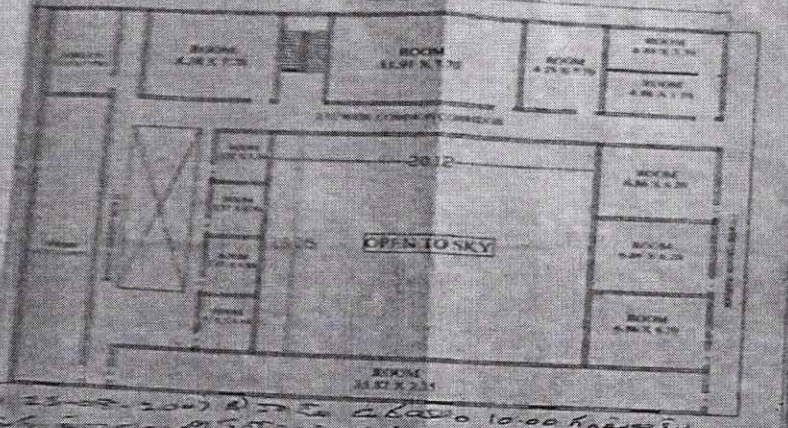
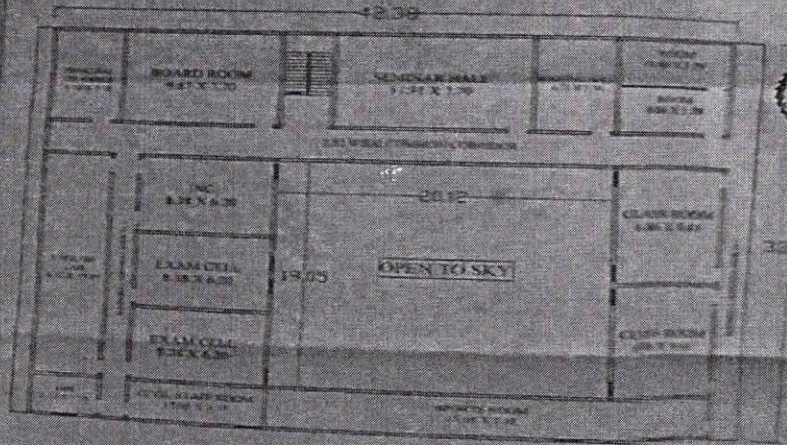
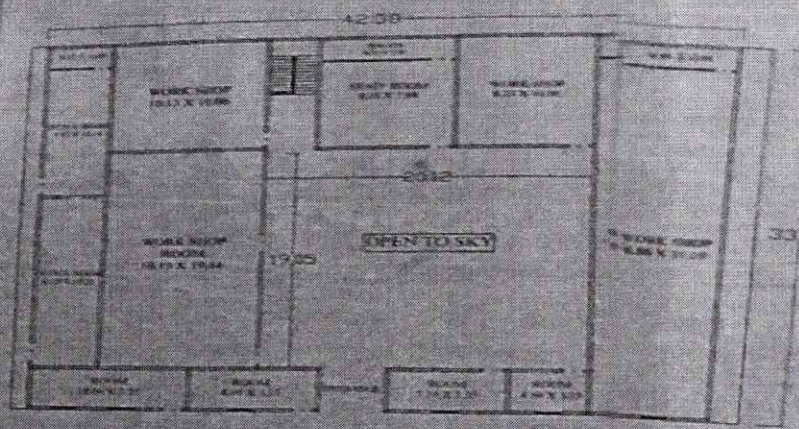
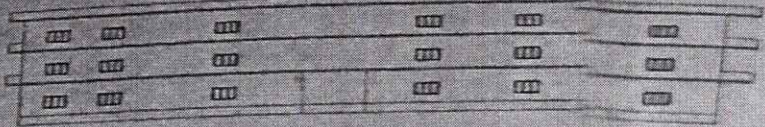
BLOCK-A



PRINCIPAL

Sri Venkateswara College of Engineering & Technology
ETCHERLA, Srikakulam-532410 (A.P)

SECTION AND PLAN SHOWING THE R.C.C. ROOF SLAB BUILDING CONSTRUCTION TO FIRST AND SECOND FLOORS, IN NO. 5 TAG & 2 ROOF
 Sri Venkateswara College of Engineering and Technology, Etcherla, Srikakulam District, Andhra Pradesh (State)
 Reg. No. 2299, ETCHERLA VILLAGE, PANCHAYAT & MANDAL, SRIKAKULAM DISTRICT, ANDHRA PRADESH (STATE)



Handwritten notes in Telugu and English regarding the project details.

ETCHERLA G.P.
 Etcherla, Srikakulam District, Andhra Pradesh

SECRETARY
 SRI VENKATESWARA COLLEGE OF ENGINEERING & TECHNOLOGY
 ETCHERLA, SRIKAKULAM-532410

PRINCIPAL
 Sri Venkateswara College of Engineering & Technology
 ETCHERLA, Srikakulam-532410 (A.P.)

PLAN SHOWING THE PROPOSED BLOCK-I GROUND FLOOR & FIRST FLOOR.
 II. GROUND, FIRST FLOOR, SECOND FLOOR & 3RD FLOOR, JSCC ROOF SLABBED
 HERE CONSTRUCTION IN S.NO: 5-1B & 2A-1 OF SRI VENKATESWARA COLLEGE
 ENGINEERING AND TECHNOLOGY OF VINAY EDUCATIONAL SOCIETY,
 RLA VILLAGE, PANCHAYAT AND MANOHL, SRIKAKULAM DISTRICT, ANDHRA PRADESH

ALL DIMENSIONS ARE
 IN METERS. ONLY
 SCALE = 1:200

AREA STATEMENT (BLOCK-I)
 GROUND FLOOR AREA: 1158.25 SQ.M.
 FIRST FLOOR AREA: 1158.25 SQ.M.

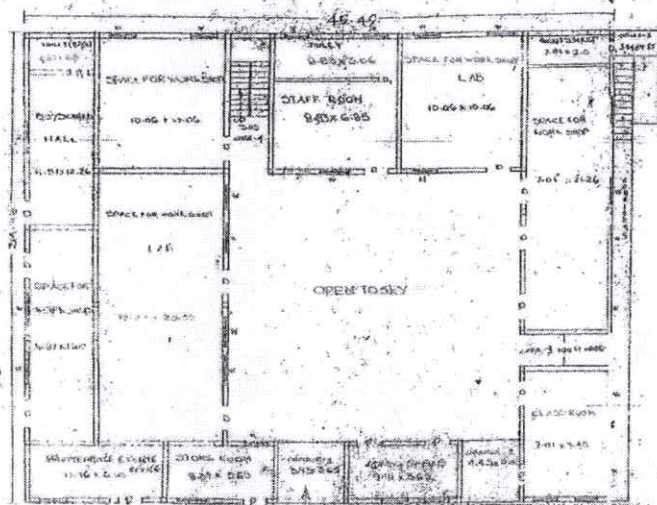
BLOCK-I



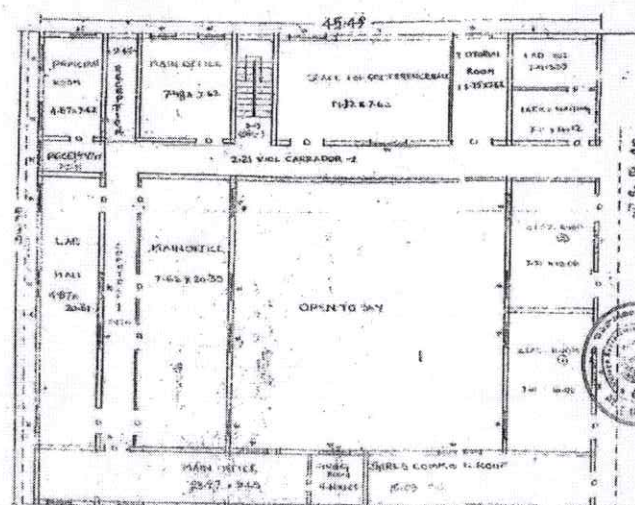
ELEVATION



SECTION CH-A-A



GROUND FLOOR PLAN



FIRST FLOOR PLAN

PRINCIPAL
 Sri Venkateswara College of Engineering & Technology
 ETCHERLA, SRIKAKULAM-532 402 (A.P.)

Sanctioned by
 the Government of
 Andhra Pradesh
 10.10.2000
 4.5.10.0
 10.10.2000

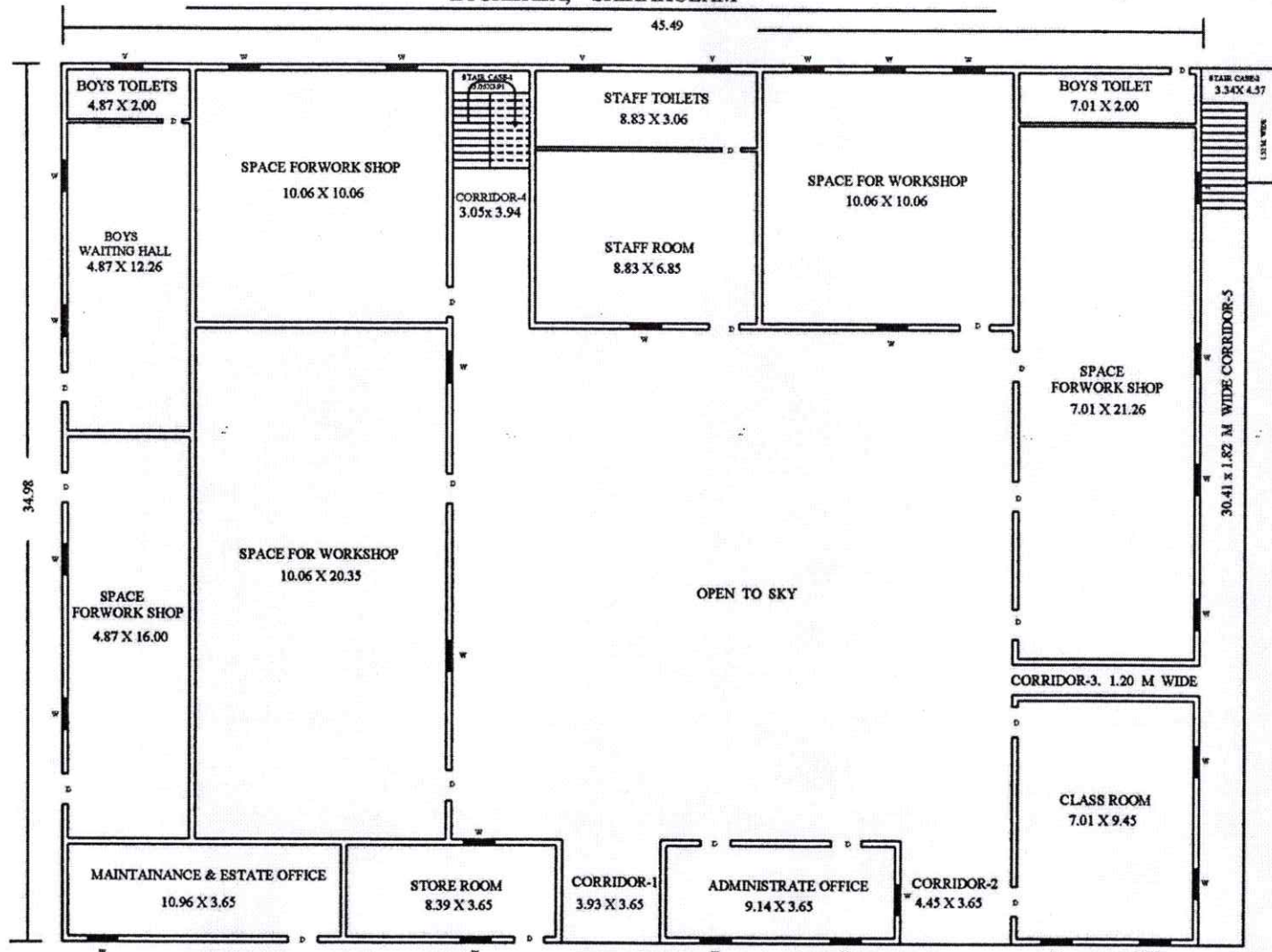


Executive Officer (P.S.)
 ETCHERLA (S.P.)
 Etcherla, Srikakulam

Secretary / Correspondent
 VINAY EDUCATIONAL SOCIETY
 ETCHERLA-532 402
 Srikakulam (A.P.)

SRI VENKATESWARA SOCIETY
 100, 101, 102, 103, 104
 CHITRAKOOT
 5TH FLOOR
 100/101, 102/103
 104/105, 106/107
 108/109, 110/111
 112/113, 114/115
 116/117, 118/119
 120/121, 122/123
 124/125, 126/127
 128/129, 130/131
 132/133, 134/135
 136/137, 138/139
 140/141, 142/143
 144/145, 146/147
 148/149, 150/151
 152/153, 154/155
 156/157, 158/159
 160/161, 162/163
 164/165, 166/167
 168/169, 170/171
 172/173, 174/175
 176/177, 178/179
 180/181, 182/183
 184/185, 186/187
 188/189, 190/191
 192/193, 194/195
 196/197, 198/199
 200/201, 202/203
 204/205, 206/207
 208/209, 210/211
 212/213, 214/215
 216/217, 218/219
 220/221, 222/223
 224/225, 226/227
 228/229, 230/231
 232/233, 234/235
 236/237, 238/239
 240/241, 242/243
 244/245, 246/247
 248/249, 250/251
 252/253, 254/255
 256/257, 258/259
 260/261, 262/263
 264/265, 266/267
 268/269, 270/271
 272/273, 274/275
 276/277, 278/279
 280/281, 282/283
 284/285, 286/287
 288/289, 290/291
 292/293, 294/295
 296/297, 298/299
 300/301, 302/303
 304/305, 306/307
 308/309, 310/311
 312/313, 314/315
 316/317, 318/319
 320/321, 322/323
 324/325, 326/327
 328/329, 330/331
 332/333, 334/335
 336/337, 338/339
 340/341, 342/343
 344/345, 346/347
 348/349, 350/351
 352/353, 354/355
 356/357, 358/359
 360/361, 362/363
 364/365, 366/367
 368/369, 370/371
 372/373, 374/375
 376/377, 378/379
 380/381, 382/383
 384/385, 386/387
 388/389, 390/391
 392/393, 394/395
 396/397, 398/399
 400/401, 402/403
 404/405, 406/407
 408/409, 410/411
 412/413, 414/415
 416/417, 418/419
 420/421, 422/423
 424/425, 426/427
 428/429, 430/431
 432/433, 434/435
 436/437, 438/439
 440/441, 442/443
 444/445, 446/447
 448/449, 450/451
 452/453, 454/455
 456/457, 458/459
 460/461, 462/463
 464/465, 466/467
 468/469, 470/471
 472/473, 474/475
 476/477, 478/479
 480/481, 482/483
 484/485, 486/487
 488/489, 490/491
 492/493, 494/495
 496/497, 498/499
 500/501, 502/503
 504/505, 506/507
 508/509, 510/511
 512/513, 514/515
 516/517, 518/519
 520/521, 522/523
 524/525, 526/527
 528/529, 530/531
 532/533, 534/535
 536/537, 538/539
 540/541, 542/543
 544/545, 546/547
 548/549, 550/551
 552/553, 554/555
 556/557, 558/559
 560/561, 562/563
 564/565, 566/567
 568/569, 570/571
 572/573, 574/575
 576/577, 578/579
 580/581, 582/583
 584/585, 586/587
 588/589, 590/591
 592/593, 594/595
 596/597, 598/599
 600/601, 602/603
 604/605, 606/607
 608/609, 610/611
 612/613, 614/615
 616/617, 618/619
 620/621, 622/623
 624/625, 626/627
 628/629, 630/631
 632/633, 634/635
 636/637, 638/639
 640/641, 642/643
 644/645, 646/647
 648/649, 650/651
 652/653, 654/655
 656/657, 658/659
 660/661, 662/663
 664/665, 666/667
 668/669, 670/671
 672/673, 674/675
 676/677, 678/679
 680/681, 682/683
 684/685, 686/687
 688/689, 690/691
 692/693, 694/695
 696/697, 698/699
 700/701, 702/703
 704/705, 706/707
 708/709, 710/711
 712/713, 714/715
 716/717, 718/719
 720/721, 722/723
 724/725, 726/727
 728/729, 730/731
 732/733, 734/735
 736/737, 738/739
 740/741, 742/743
 744/745, 746/747
 748/749, 750/751
 752/753, 754/755
 756/757, 758/759
 760/761, 762/763
 764/765, 766/767
 768/769, 770/771
 772/773, 774/775
 776/777, 778/779
 780/781, 782/783
 784/785, 786/787
 788/789, 790/791
 792/793, 794/795
 796/797, 798/799
 800/801, 802/803
 804/805, 806/807
 808/809, 810/811
 812/813, 814/815
 816/817, 818/819
 820/821, 822/823
 824/825, 826/827
 828/829, 830/831
 832/833, 834/835
 836/837, 838/839
 840/841, 842/843
 844/845, 846/847
 848/849, 850/851
 852/853, 854/855
 856/857, 858/859
 860/861, 862/863
 864/865, 866/867
 868/869, 870/871
 872/873, 874/875
 876/877, 878/879
 880/881, 882/883
 884/885, 886/887
 888/889, 890/891
 892/893, 894/895
 896/897, 898/899
 900/901, 902/903
 904/905, 906/907
 908/909, 910/911
 912/913, 914/915
 916/917, 918/919
 920/921, 922/923
 924/925, 926/927
 928/929, 930/931
 932/933, 934/935
 936/937, 938/939
 940/941, 942/943
 944/945, 946/947
 948/949, 950/951
 952/953, 954/955
 956/957, 958/959
 960/961, 962/963
 964/965, 966/967
 968/969, 970/971
 972/973, 974/975
 976/977, 978/979
 980/981, 982/983
 984/985, 986/987
 988/989, 990/991
 992/993, 994/995
 996/997, 998/999
 1000/1001, 1002/1003
 1004/1005, 1006/1007
 1008/1009, 1010/1011
 1012/1013, 1014/1015
 1016/1017, 1018/1019
 1020/1021, 1022/1023
 1024/1025, 1026/1027
 1028/1029, 1030/1031
 1032/1033, 1034/1035
 1036/1037, 1038/1039
 1040/1041, 1042/1043
 1044/1045, 1046/1047
 1048/1049, 1050/1051
 1052/1053, 1054/1055
 1056/1057, 1058/1059
 1060/1061, 1062/1063
 1064/1065, 1066/1067
 1068/1069, 1070/1071
 1072/1073, 1074/1075
 1076/1077, 1078/1079
 1080/1081, 1082/1083
 1084/1085, 1086/1087
 1088/1089, 1090/1091
 1092/1093, 1094/1095
 1096/1097, 1098/1099
 1100/1101, 1102/1103
 1104/1105, 1106/1107
 1108/1109, 1110/1111
 1112/1113, 1114/1115
 1116/1117, 1118/1119
 1120/1121, 1122/1123
 1124/1125, 1126/1127
 1128/1129, 1130/1131
 1132/1133, 1134/1135
 1136/1137, 1138/1139
 1140/1141, 1142/1143
 1144/1145, 1146/1147
 1148/1149, 1150/1151
 1152/1153, 1154/1155
 1156/1157, 1158/1159
 1160/1161, 1162/1163
 1164/1165, 1166/1167
 1168/1169, 1170/1171
 1172/1173, 1174/1175
 1176/1177, 1178/1179
 1180/1181, 1182/1183
 1184/1185, 1186/1187
 1188/1189, 1190/1191
 1192/1193, 1194/1195
 1196/1197, 1198/1199
 1200/1201, 1202/1203
 1204/1205, 1206/1207
 1208/1209, 1210/1211
 1212/1213, 1214/1215
 1216/1217, 1218/1219
 1220/1221, 1222/1223
 1224/1225, 1226/1227
 1228/1229, 1230/1231
 1232/1233, 1234/1235
 1236/1237, 1238/1239
 1240/1241, 1242/1243
 1244/1245, 1246/1247
 1248/1249, 1250/1251
 1252/1253, 1254/1255
 1256/1257, 1258/1259
 1260/1261, 1262/1263
 1264/1265, 1266/1267
 1268/1269, 1270/1271
 1272/1273, 1274/1275
 1276/1277, 1278/1279
 1280/1281, 1282/1283
 1284/1285, 1286/1287
 1288/1289, 1290/1291
 1292/1293, 1294/1295
 1296/1297, 1298/1299
 1300/1301, 1302/1303
 1304/1305, 1306/1307
 1308/1309, 1310/1311
 1312/1313, 1314/1315
 1316/1317, 1318/1319
 1320/1321, 1322/1323
 1324/1325, 1326/1327
 1328/1329, 1330/1331
 1332/1333, 1334/1335
 1336/1337, 1338/1339
 1340/1341, 1342/1343
 1344/1345, 1346/1347
 1348/1349, 1350/1351
 1352/1353, 1354/1355
 1356/1357, 1358/1359
 1360/1361, 1362/1363
 1364/1365, 1366/1367
 1368/1369, 1370/1371
 1372/1373, 1374/1375
 1376/1377, 1378/1379
 1380/1381, 1382/1383
 1384/1385, 1386/1387
 1388/1389, 1390/1391
 1392/1393, 1394/1395
 1396/1397, 1398/1399
 1400/1401, 1402/1403
 1404/1405, 1406/1407
 1408/1409, 1410/1411
 1412/1413, 1414/1415
 1416/1417, 1418/1419
 1420/1421, 1422/1423
 1424/1425, 1426/1427
 1428/1429, 1430/1431
 1432/1433, 1434/1435
 1436/1437, 1438/1439
 1440/1441, 1442/1443
 1444/1445, 1446/1447
 1448/1449, 1450/1451
 1452/1453, 1454/1455
 1456/1457, 1458/1459
 1460/1461, 1462/1463
 1464/1465, 1466/1467
 1468/1469, 1470/1471
 1472/1473, 1474/1475
 1476/1477, 1478/1479
 1480/1481, 1482/1483
 1484/1485, 1486/1487
 1488/1489, 1490/1491
 1492/1493, 1494/1495
 1496/1497, 1498/1499
 1500/1501, 1502/1503
 1504/1505, 1506/1507
 1508/1509, 1510/1511
 1512/1513, 1514/1515
 1516/1517, 1518/1519
 1520/1521, 1522/1523
 1524/1525, 1526/1527
 1528/1529, 1530/1531
 1532/1533, 1534/1535
 1536/1537, 1538/1539
 1540/1541, 1542/1543
 1544/1545, 1546/1547
 1548/1549, 1550/1551
 1552/1553, 1554/1555
 1556/1557, 1558/1559
 1560/1561, 1562/1563
 1564/1565, 1566/1567
 1568/1569, 1570/1571
 1572/1573, 1574/1575
 1576/1577, 1578/1579
 1580/1581, 1582/1583
 1584/1585, 1586/1587
 1588/1589, 1590/1591
 1592/1593, 1594/1595
 1596/1597, 1598/1599
 1600/1601, 1602/1603
 1604/1605, 1606/1607
 1608/1609, 1610/1611
 1612/1613, 1614/1615
 1616/1617, 1618/1619
 1620/1621, 1622/1623
 1624/1625, 1626/1627
 1628/1629, 1630/1631
 1632/1633, 1634/1635
 1636/1637, 1638/1639
 1640/1641, 1642/1643
 1644/1645, 1646/1647
 1648/1649, 1650/1651
 1652/1653, 1654/1655
 1656/1657, 1658/1659
 1660/1661, 1662/1663
 1664/1665, 1666/1667
 1668/1669, 1670/1671
 1672/1673, 1674/1675
 1676/1677, 1678/1679
 1680/1681, 1682/1683
 1684/1685, 1686/1687
 1688/1689, 1690/1691
 1692/1693, 1694/1695
 1696/1697, 1698/1699
 1700/1701, 1702/1703
 1704/1705, 1706/1707
 1708/1709, 1710/1711
 1712/1713, 1714/1715
 1716/1717, 1718/1719
 1720/1721, 1722/1723
 1724/1725, 1726/1727
 1728/1729, 1730/1731
 1732/1733, 1734/1735
 1736/1737, 1738/1739
 1740/1741, 1742/1743
 1744/1745, 1746/1747
 1748/1749, 1750/1751
 1752/1753, 1754/1755
 1756/1757, 1758/1759
 1760/1761, 1762/1763
 1764/1765, 1766/1767
 1768/1769, 1770/1771
 1772/1773, 1774/1775
 1776/1777, 1778/1779
 1780/1781, 1782/1783
 1784/1785, 1786/1787
 1788/1789, 1790/1791
 1792/1793, 1794/1795
 1796/1797, 1798/1799
 1800/1801, 1802/1803
 1804/1805, 1806/1807
 1808/1809, 1810/1811
 1812/1813, 1814/1815
 1816/1817, 1818/1819
 1820/1821, 1822/1823
 1824/1825, 1826/1827
 1828/1829, 1830/1831
 1832/1833, 1834/1835
 1836/1837, 1838/1839
 1840/1841, 1842/1843
 1844/1845, 1846/1847
 1848/1849, 1850/1851
 1852/1853, 1854/1855
 1856/1857, 1858/1859
 1860/1861, 1862/1863
 1864/1865, 1866/1867
 1868/1869, 1870/1871
 1872/1873, 1874/1875
 1876/1877, 1878/1879
 1880/1881, 1882/1883
 1884/1885, 1886/1887
 1888/1889, 1890/1891
 1892/1893, 1894/1895
 1896/1897, 1898/1899
 1900/1901, 1902/1903
 1904/1905, 1906/1907
 1908/1909, 1910/1911
 1912/1913, 1914/1915
 1916/1917, 1918/1919
 1920/1921, 1922/1923
 1924/1925, 1926/1927
 1928/1929, 1930/1931
 1932/1933, 1934/1935
 1936/1937, 1938/1939
 1940/1941, 1942/1943
 1944/1945, 1946/1947
 1948/1949, 1950/1951
 1952/1953, 1954/1955
 1956/1957, 1958/1959
 1960/1961, 1962/1963
 1964/1965, 1966/1967
 1968/1969, 1970/1971
 1972/1973, 1974/1975
 1976/1977, 1978/1979
 1980/1981, 1982/1983
 1984/1985, 1986/1987
 1988/1989, 1990/1991
 1992/1993, 1994/1995
 1996/1997, 1998/1999
 2000/2001, 2002/2003
 2004/2005, 2006/2007
 2008/2009, 2010/2011
 2012/2013, 2014/2015
 2016/2017, 2018/2019
 2

**SRI VENKATESWARA COLLEGE OF ENGINEERING AND TECHNOLOGY
ETCHERLA, SRIKAKULAM**



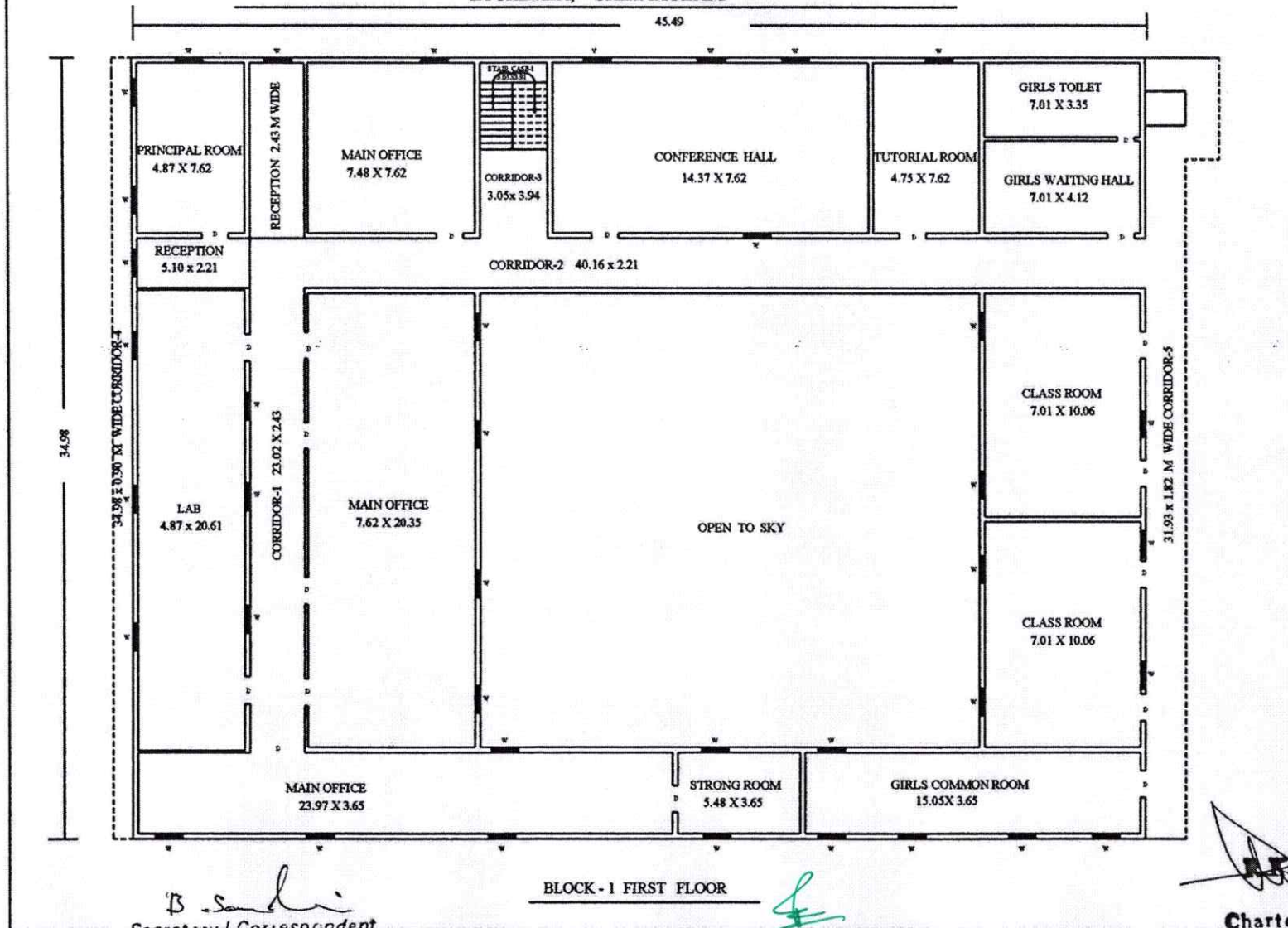
BLOCK - 1, GROUND FLOOR

B. Sankar
Secretary / Correspondent
VIKAS EDUCATIONAL SOCIETY
ETCHERLA-532 402
Srikakulam (A.P.)

PRINCIPAL
Sri Venkateswara College of Engineering & Technology
ETCHERLA, Srikakulam-532410 (A.P.)

R.K.L. Prasad
R.K.L. PRASAD,
B.E., FIV.,
Chartered Engineer &
Approved Valuer
Opp. Old ... Office
SRIKAKULAM-532001.

**SRI VENKATESWARA COLLEGE OF ENGINEERING AND TECHNOLOGY
ETCHERLA, SRIKAKULAM**



BLOCK - 1 FIRST FLOOR

B. Sankar
Secretary / Correspondent
VIKAS EDUCATIONAL SOCIETY
ETCHERLA-532 402
Srikakulam (A.P.)

PRINCIPAL
Sri Venkateswara College of Engineering & Technology
ETCHERLA, Srikakulam-532410 (A.P.)

A.K.L. Prasad
A.K.L. PRASAD,
B.E., I.E., FIV.,
Chartered Engineer &
Approved Valuer,
Opp. Old Post Office
ILLISTIPURAM,
SRIKAKULAM-532001.



**SRI VENKATESWARA
COLLEGE OF ENGINEERING & TECHNOLOGY**

ISO 9001:2015 Certified

Approved by AICTE, New Delhi, Affiliated to JNTUGV, Vizianagaram

Office : +91 9705576693 , email: principal_svcet@yahoo.com, website: www.svcet.info

PLAN OF BLOCK-B



SRI VENKATESWARA COLLEGE OF ENGINEERING & TECHNOLOGY

ISO 9001:2015 Certified

Approved by AICTE, New Delhi, Affiliated to JNTUGV, Vizianagaram

Office : +91 9705576693 , email: principal_svcet@yahoo.com, website: www.svcet.info



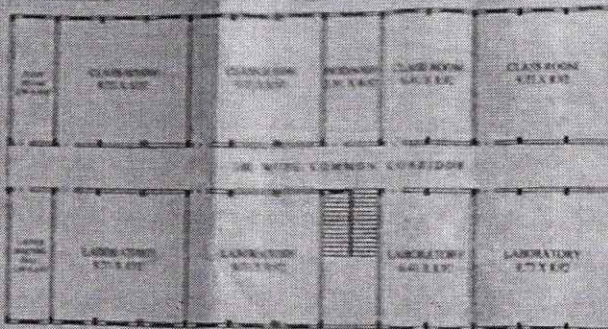
BLOCK-B



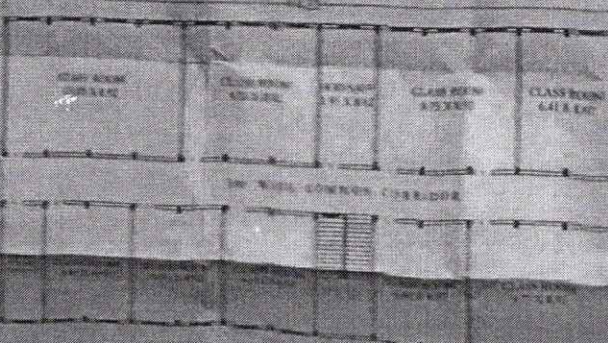
4

PRINCIPAL

Sri Venkateswara College of Engineering & Technology
ETCHERLA, Srikakulam-532410 (A.P)



EXISTING SECOND FLOOR PLAN



EXISTING FLOOR PLAN

E. L. ...



AREA STATEMENT	
EXISTING PLANT AREA IN SQ	941.50 Sqr
EXISTING PLANT AREA IN FT	941.50 Sqr
EXISTING PLANT AREA IN SF	941.50 Sqr
EXISTING PLANT AREA IN TP	941.50 Sqr
TOTAL PLANT AREA	3846.24 Sqr

SECRETARY

SECRETARY
TAMIL NADU EDUCATIONAL SOCIETY
EMBARLA, SHINAKULAM-532 430

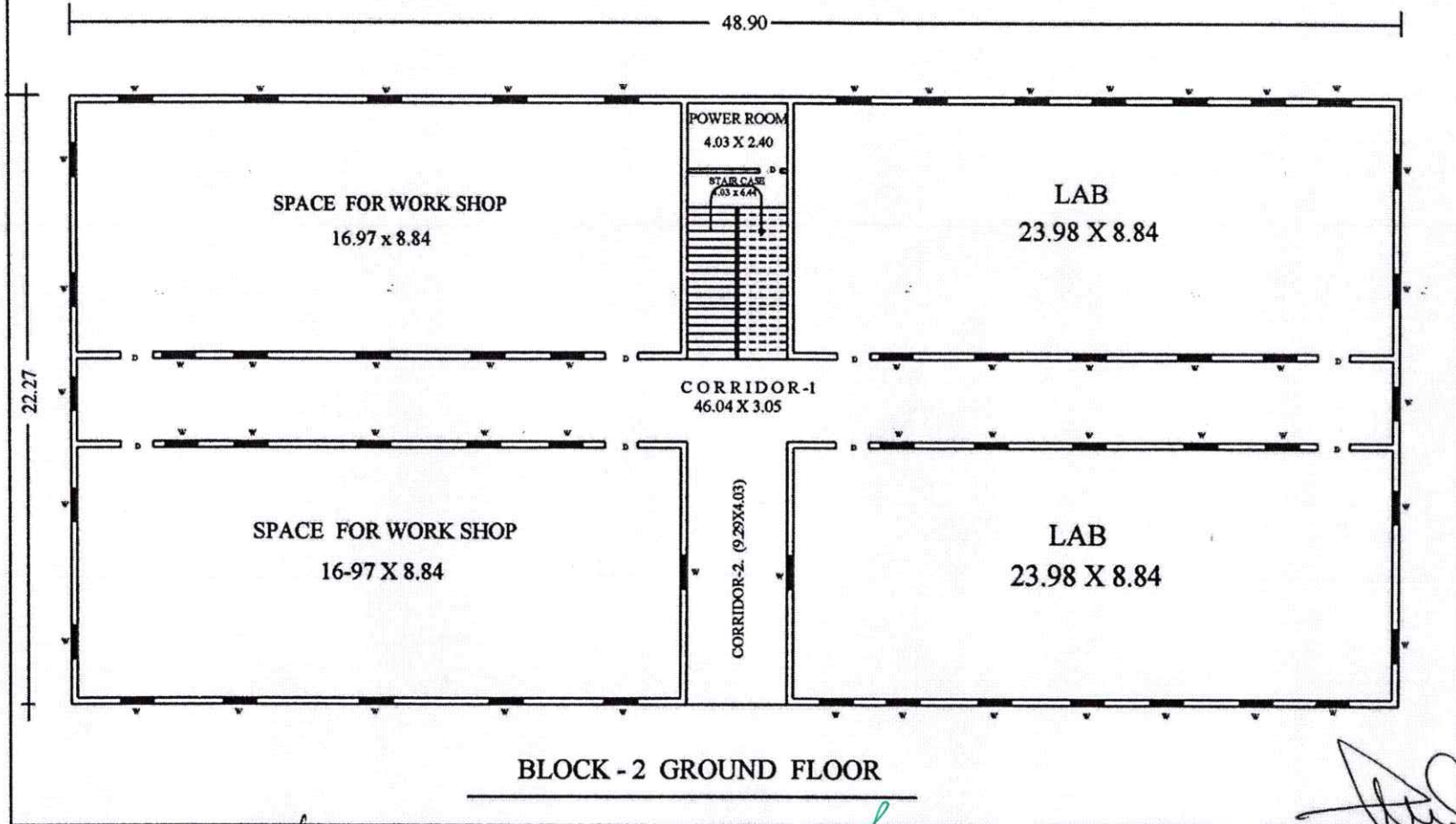
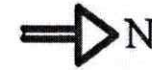
Over the

Sri Venkateswara College of Engineering & Technology
ETCHERLA, Srikakulam-532410 (A.P)

Principal
College of Engineering & Technology
Sri Kalaiyam - 532410 (A.P.)

PRINCIPAL
Sri Venkateswara College of Engineering & Technology
ETCHERLA, Srikakulam-532410 (A.P)

SRI VENKATESWARA COLLEGE OF ENGINEERING AND TECHNOLOGY
ETCHERLA, SRIKAKULAM



B. Sankar
Secretary / Correspondent
VIKAS EDUCATIONAL SOCIETY
ETCHERLA-532 402
Srikakulam (A.P.)

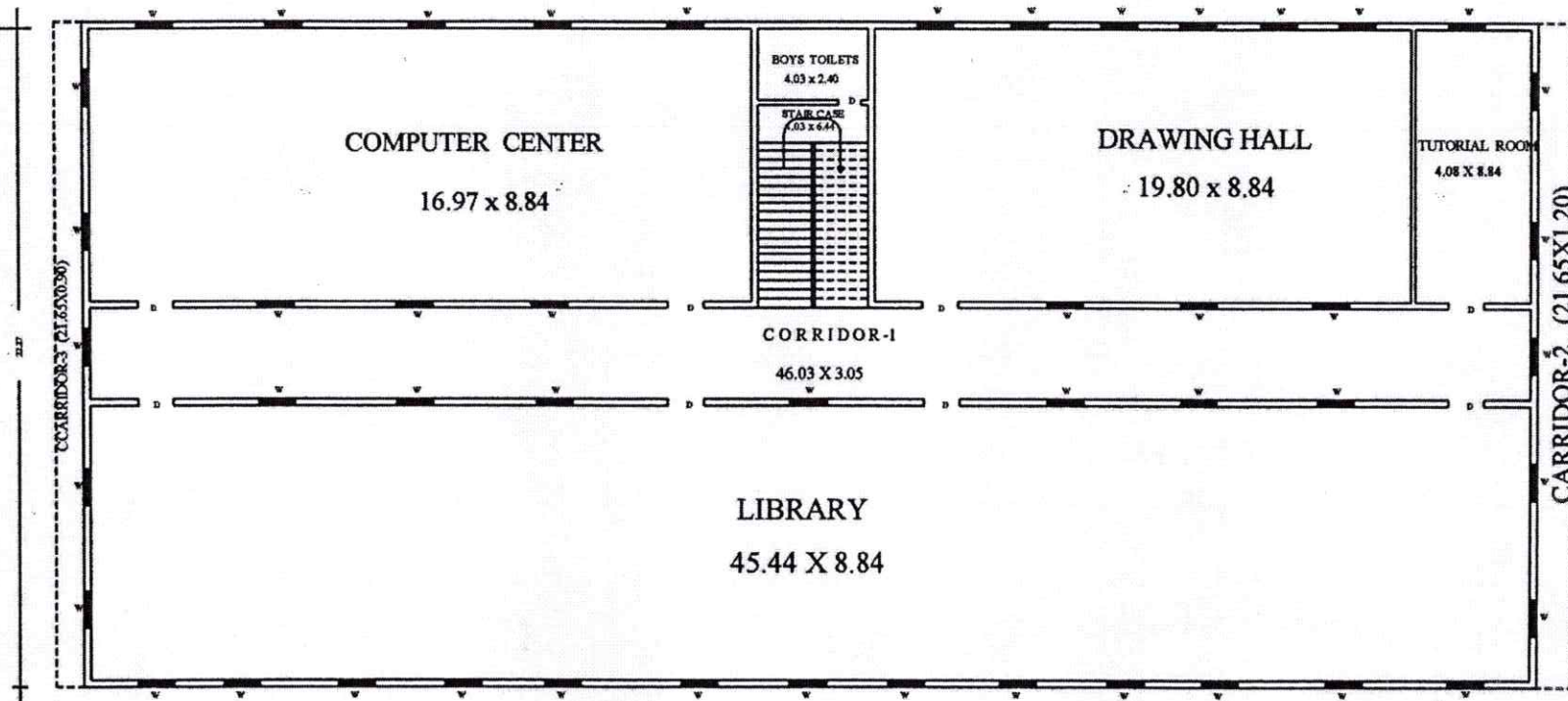
[Signature]
PRINCIPAL
Sri Venkateswara College of Engineering & Technology
ETCHERLA, Srikakulam-532410 (A.P.)

[Signature]
R.K.L. PRASAD;
B.E., M.I.E., FIV.,
Chartered Engineer &
Approved Valuer
Opp. Old Employment Office
M. ISIPURAM,
SRIKAKULAM-532001.

SRI VENKATESWARA COLLEGE OF ENGINEERING AND TECHNOLOGY
ETCHERLA, SRIKAKULAM



48.90



BLOCK - 2 FIRST FLOOR

B-S
Secretary / Correspondent
VIKAS EDUCATIONAL SOCIETY
ETCHERLA-532 402
Srikakulam (A.P.)

PRINCIPAL
Sri Venkateswara College of Engineering & Technology
ETCHERLA, Srikakulam-532410 (A.P.)

R.K. L. PRASAD,
B.E., I.I.E., FIV.,
Chartered Engineer &
Approved Valuer
Opp. Old Employment Office
ILLIKONNAM,
SRIKAKULAM-532001



SRI VENKATESWARA COLLEGE OF ENGINEERING & TECHNOLOGY

ISO 9001:2015 Certified

Approved by AICTE, New Delhi, Affiliated to JNTUGV, Vizianagaram

Office : +91 9705576693 , email: principal_svcet@yahoo.com, website: www.svcet.info

BLOCK -C



SRI VENKATESWARA COLLEGE OF ENGINEERING & TECHNOLOGY

ISO 9001:2015 Certified

Approved by AICTE, New Delhi, Affiliated to JNTUGV, Vizianagaram

Office : (+91 9705576693), email: principal_svcet@yahoo.com, website: www.svcet.info



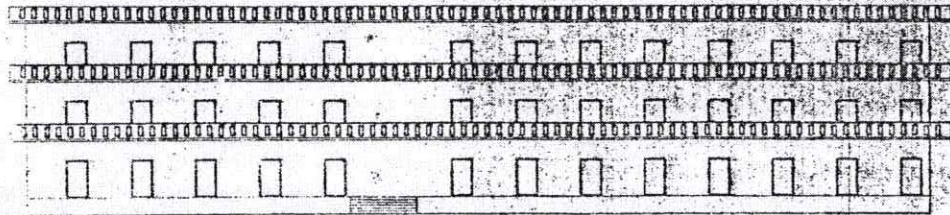
BLOCK-C



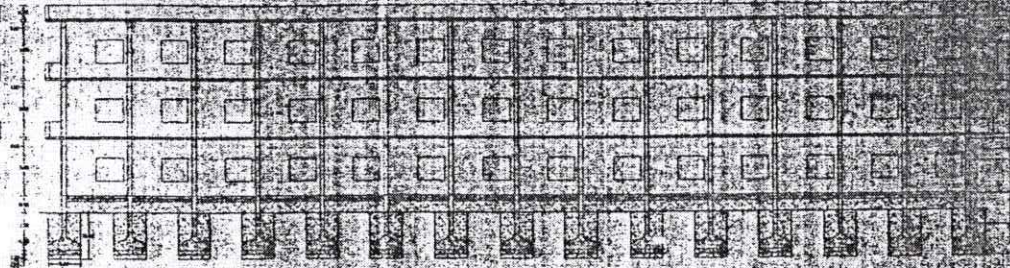

PRINCIPAL
Sri Venkateswara College of Engineering & Technology
ETCHERLA, Srikakulam-532410 (A.P)

SITE PLAN AND PLAN SHOWING THE R.C.C. ROOF BUILDING CONSTRUCTION IN GROUND, FIRST & SECOND FLOORS, IN S.NO 5-142 & 5-18 OF "SHRI VENKATESWARA PG & DEGREE COLLEGE" UNDER THE MANAGEMENT OF

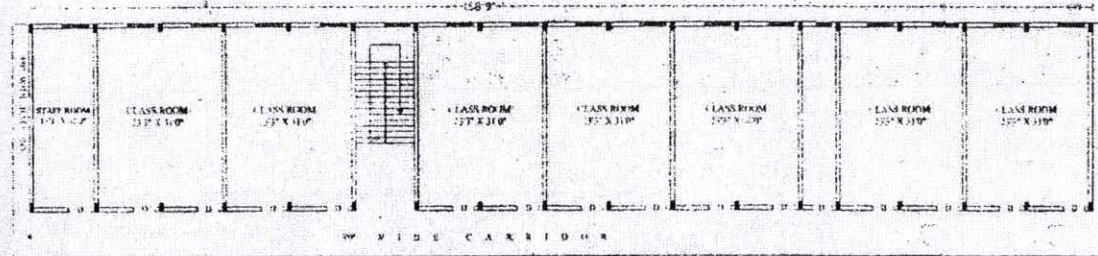
"VIKAS EDUCATIONAL SOCIETY" Regd. No. 22047, ETCHERLA (VILLAGE PANCHYAT & MANDAL), SRIKAKULAM DISTRICT, ANDHRA PRADESH, INDIA.



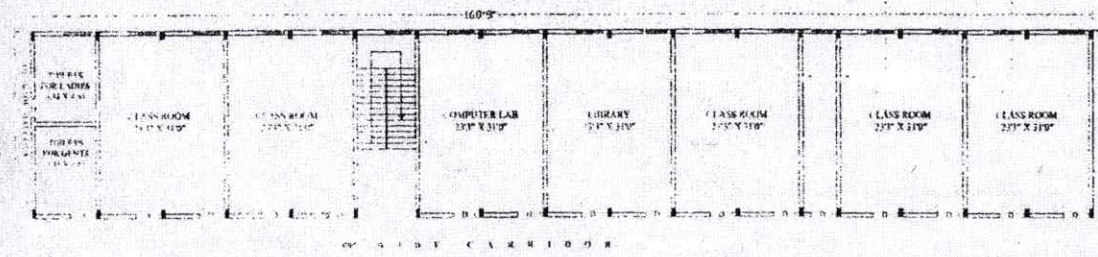
ELEVATION



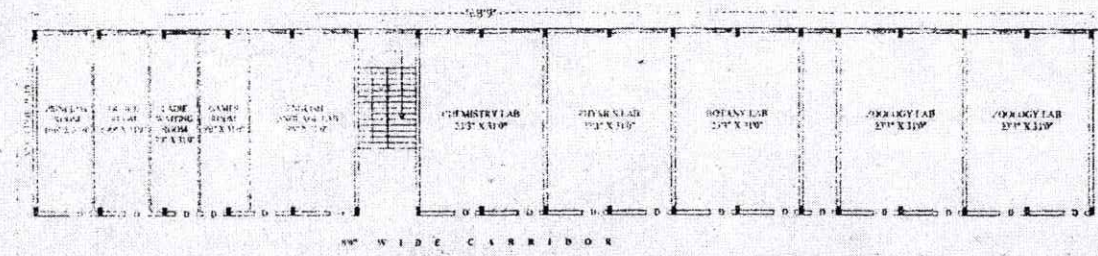
SECTION - "A-A"



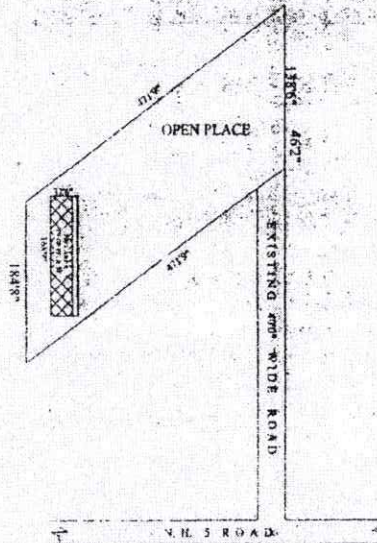
PROPOSED SECOND FLOOR PLAN



PROPOSED FIRST FLOOR PLAN



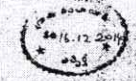
PROPOSED GROUND FLOOR PLAN



SITE PLAN
SCALE: 1:100

దేది 16-12-2014 తేదీనకు ఉపరా 10.00 గంటలకు
కాటా ఎన్జనీర్ (గ్రాండ్) పంపించి సర్దుబాటుచేయవలసి
4(a) ప్రకారం ఈ ఆర్డర్ పై పాటించుకొనవలసి
అవసరం ఉపరా సూచించబడింది.

Executive Officer (P.S.)
ETCHERLA (G.P.)
Etcherla (Mandalam)



M. Prasad
Vikas Educational Society
Etcherla



PRINCIPAL

Shri Venkateswara College of Engineering & Technology
ETCHERLA, Srikakulam-532410 (A.P.)

SPECIFICATIONS	
1. 0.15 THK. R.C.C. SLAB	1:1:4
2. 0.75 THK. R.C.C. BEAM	1:1:4
3. 0.23 THK. BRICK WORK	1:1:4
4. 12MM THK. PLASTERING	1:1:4
5. MARBLE FLOORING	1:1:4
6. R.C. FOOTING FOUNDATION	1:1:4
PROPOSED DIMENSIONS	
D. DOORS	10'0" X 7'0"
W. WINDOWS	5'0" X 4'0"
AREA STATEMENT	
TOTAL SITE AREA	171,700 S.M.
PROPOSED PLINTH AREA IN G.P.	5,800 S.M.
PROPOSED PLINTH AREA IN 1 ST	5,400 S.M.
PROPOSED PLINTH AREA IN 2 ND	5,400 S.M.
TOTAL PLINTH AREA IN 3 RD	16,600 S.M.
OPEN AREA	155,100 S.M.
ALL DIMENSIONS ARE IN METRES	
SCALE: 1:100, 1:500	

SIG. OF SECRETARY
D. Sankar
Secretary Vikas Educational Society
ETCHERLA-532410
Srikakulam (A.P.)
SIG. OF ENGINEER



SRI VENKATESWARA COLLEGE OF ENGINEERING & TECHNOLOGY

ISO 9001:2015 Certified

Approved by AICTE, New Delhi, Affiliated to JNTUGV, Vizianagaram

Office : +91 9705576693 , email: principal_svcet@yahoo.com, website: www.svcet.info



CLASS ROOMS



PRINCIPAL

Sri Venkateswara College of Engineering & Technology
ETCHERLA, Srikakulam-532410 (A.P)



SRI VENKATESWARA COLLEGE OF ENGINEERING & TECHNOLOGY

ISO 9001:2015 Certified

Approved by AICTE, New Delhi, Affiliated to JNTUGV, Vizianagaram

Office : +91 9705576693 , email: principal_svce@yahoo.com, website: www.svceet.info

CIVIL ENGINEERING DEPARTMENT

SURVEYING LABORATORY



CONCRETE TECHNOLOGY



ENGINEERING GEOLOGY




PRINCIPAL
Sri Venkateswara College of Engineering & Technology
ETCHERLA, Srikakulam-532410 (A.P)



SRI VENKATESWARA COLLEGE OF ENGINEERING & TECHNOLOGY

ISO 9001:2015 Certified

Approved by AICTE, New Delhi, Affiliated to JNTUGV, Vizianagaram

Office : +91 9705576693 , email: principal_svcet@yahoo.com, website: www.svcet.info

GEOTECHNICAL ENGINEERING



TRANSPORTATION ENGINEERING




PRINCIPAL
Sri Venkateswara College of Engineering & Technology
ETCHERLA, Srikakulam-532410 (A.P)



SRI VENKATESWARA COLLEGE OF ENGINEERING & TECHNOLOGY

ISO 9001:2015 Certified

Approved by AICTE, New Delhi, Affiliated to JNTUGV, Vizianagaram

Office : +91 9705576693 , email: principal_svcet@yahoo.com, website: www.svcet.info

ENVIRONMENTAL ENGINEERING LAB



Students performing field survey


PRINCIPAL
Sri Venkateswara College of Engineering & Technology
ETCHERLA, Srikakulam-532410 (A.P.)



SRI VENKATESWARA COLLEGE OF ENGINEERING & TECHNOLOGY

ISO 9001:2015 Certified

Approved by AICTE, New Delhi, Affiliated to JNTUGV, Vizianagaram

Office : +91 9705576693 . email: principal_svcet@yahoo.com, website: www.svcet.info



Students performing field survey



Students practicing survey compass


PRINCIPAL
Sri Venkateswara College of Engineering & Technology
ETCHERLA, Srikakulam-532410 (A.P)



SRI VENKATESWARA COLLEGE OF ENGINEERING & TECHNOLOGY


ISO 9001:2015 Certified

Approved by AICTE, New Delhi, Affiliated to JNTUGV, Vizianagaram

Office : +91 9705576693 , email: principal_svcet@yahoo.com, website: www.svcet.info

ELECTRONICS AND COMMUNICATION ENGINEERING




PRINCIPAL
Sri Venkateswara College of Engineering & Technology
ETCHERLA, Srikakulam-532410 (A.P)



SRI VENKATESWARA COLLEGE OF ENGINEERING & TECHNOLOGY

ISO 9001:2015 Certified

Approved by AICTE, New Delhi, Affiliated to JNTUGV, Vizianagaram

Office : +91 9705576693 , email: principal_svcet@yahoo.com, website: www.svcet.info




PRINCIPAL
Sri Venkateswara College of Engineering & Technology
ETCHERLA, Srikakulam-532410 (A.P)



SRI VENKATESWARA COLLEGE OF ENGINEERING & TECHNOLOGY

ISO 9001:2015 Certified

Approved by AICTE, New Delhi, Affiliated to JNTUGV, Vizianagaram

Office : +91 9705576693 , email: principal_svcet@yahoo.com, website: www.svcet.info

DEPARTMENT OF ELECTRICAL AND ELECTRONICS ENGINEERING




PRINCIPAL
Sri Venkateswara College of Engineering & Technology
ETCHERLA, Srikakulam-532410 (A.P)



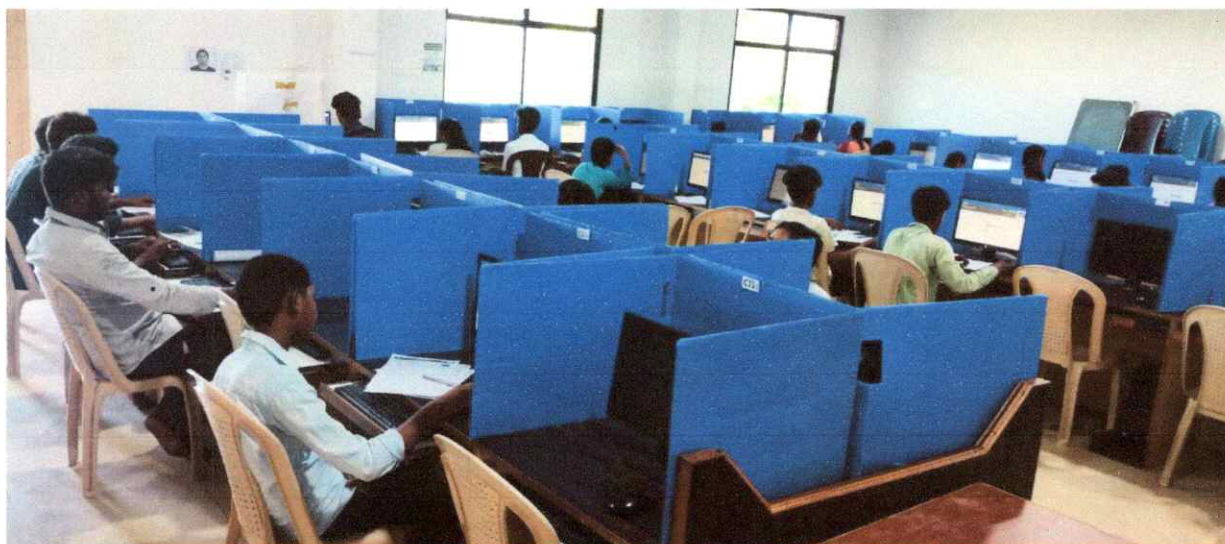
SRI VENKATESWARA COLLEGE OF ENGINEERING & TECHNOLOGY

ISO 9001:2015 Certified

Approved by AICTE, New Delhi, Affiliated to JNTUGV, Vizianagaram

Office : +91 9705576693 , email: principal_svcet@yahoo.com, website: www.svcet.info

IT Infrastructure



polytechnic

Sri Venkateswara College of Engineering & Technology
ETCHERLA, Srikakulam-532410 (A.P)

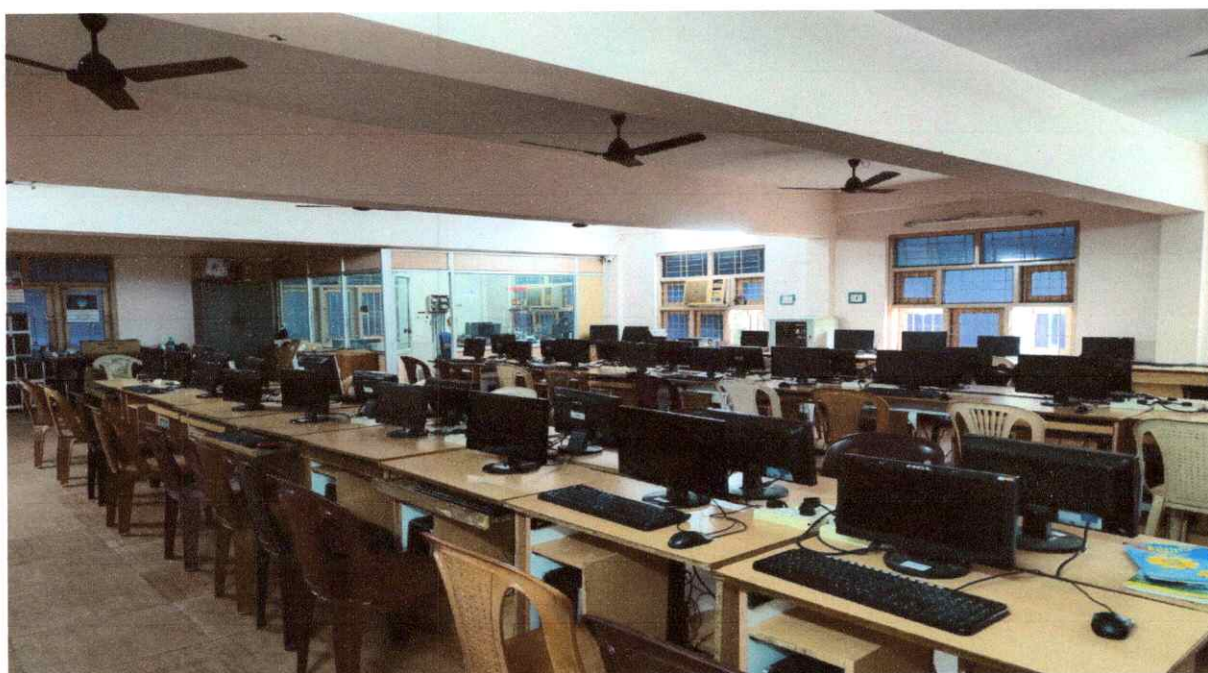
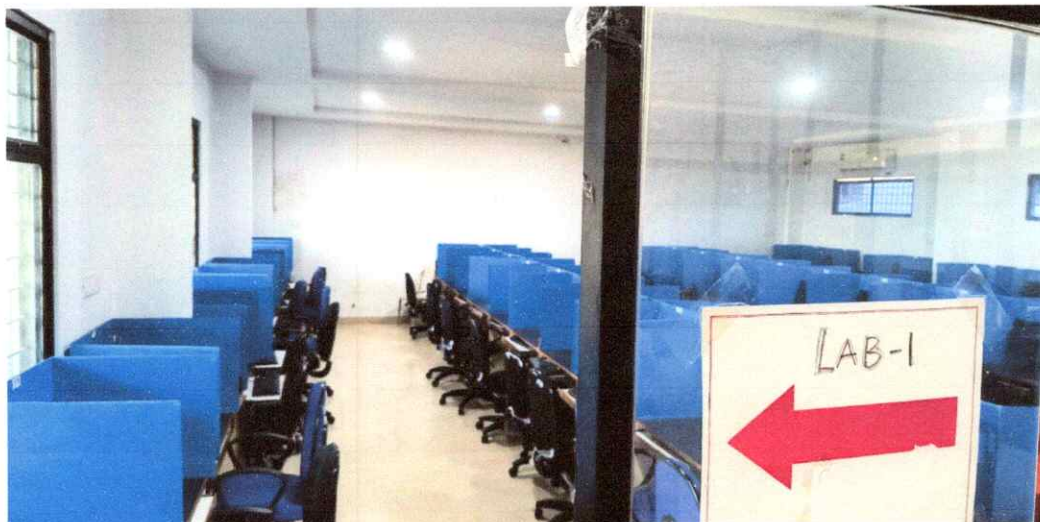


SRI VENKATESWARA COLLEGE OF ENGINEERING & TECHNOLOGY

ISO 9001:2015 Certified

Approved by AICTE, New Delhi, Affiliated to JNTUGV, Vizianagaram

Office : +91 9705576693 , email: principal_svcet@yahoo.com, website: www.svcet.info



PRINCIPAL

Sri Venkateswara College of Engineering & Technology
ETCHERLA, Srikakulam-532410 (A.P)



SRI VENKATESWARA COLLEGE OF ENGINEERING & TECHNOLOGY

ISO 9001:2015 Certified

Approved by AICTE, New Delhi, Affiliated to JNTUGV, Vizianagaram

Office : +91 9705576693 , email: principal_svcet@yahoo.com, website: www.svcet.info



English communication laboratory



PRINCIPAL

Sri Venkateswara College of Engineering & Technology
ETCHERLA, Srikakulam-532410 (A.P)



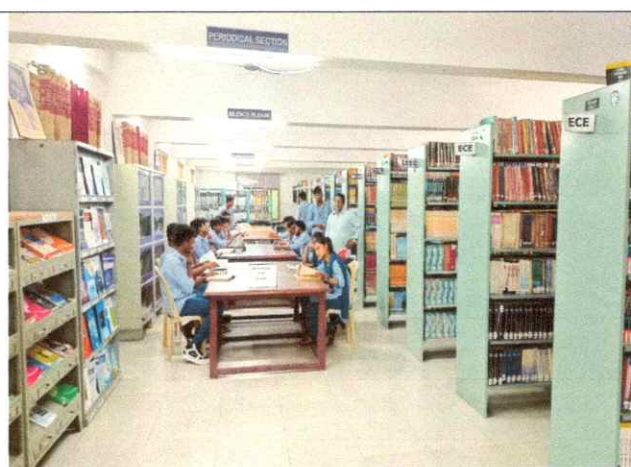
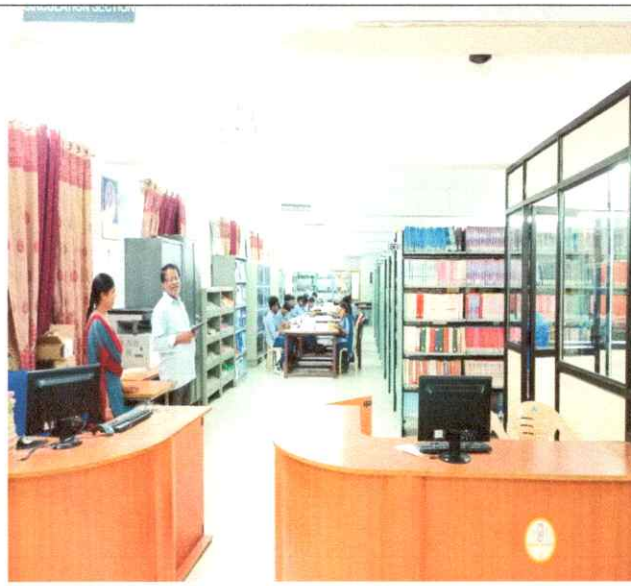
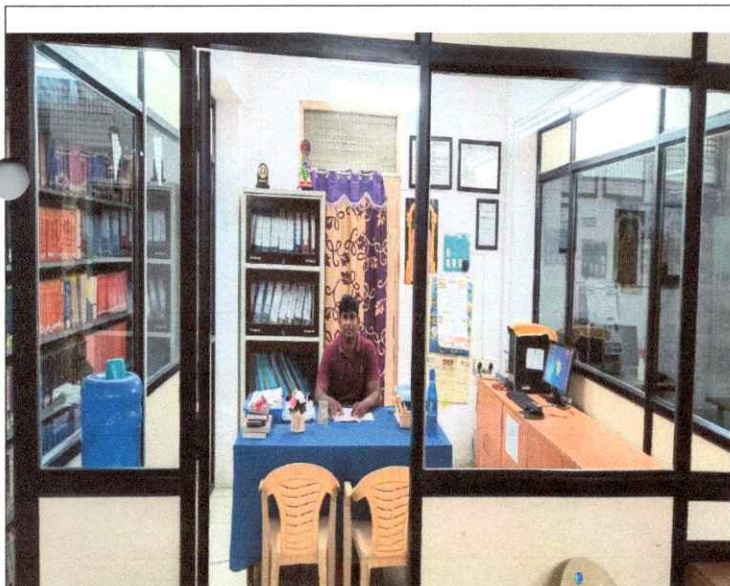
SRI VENKATESWARA COLLEGE OF ENGINEERING & TECHNOLOGY


ISO 9001:2015 Certified

Approved by AICTE, New Delhi, Affiliated to JNTUGV, Vizianagaram

Office : +91 9705576693 , email: principal_svcet@yahoo.com, website: www.svcet.info

Central Library




PRINCIPAL
Sri Venkateswara College of Engineering & Technology
ETCHERLA, Srikakulam-532410 (A.P)

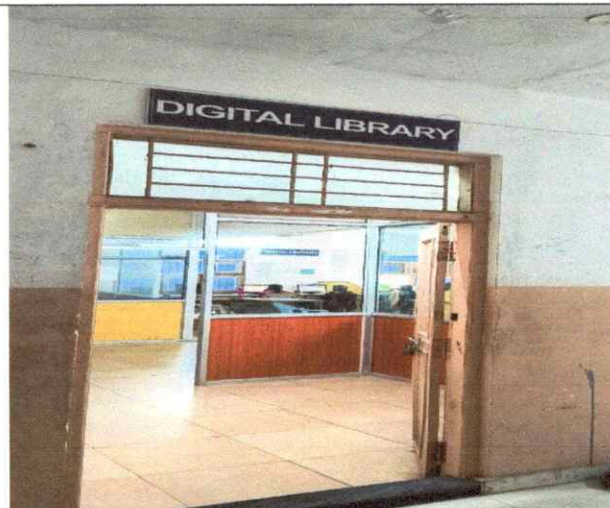
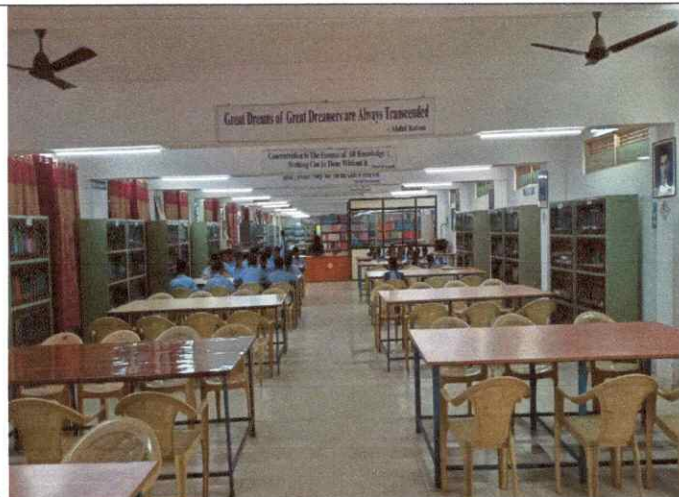


SRI VENKATESWARA COLLEGE OF ENGINEERING & TECHNOLOGY

ISO 9001:2015 Certified

Approved by AICTE, New Delhi, Affiliated to JNTUGV, Vizianagaram

Office : +91 9705576693 , email: principal_svcet@yahoo.com, website: www.svcet.info




PRINCIPAL
Sri Venkateswara College of Engineering & Technology
ETCHERLA, Srikakulam-532410 (A.P)



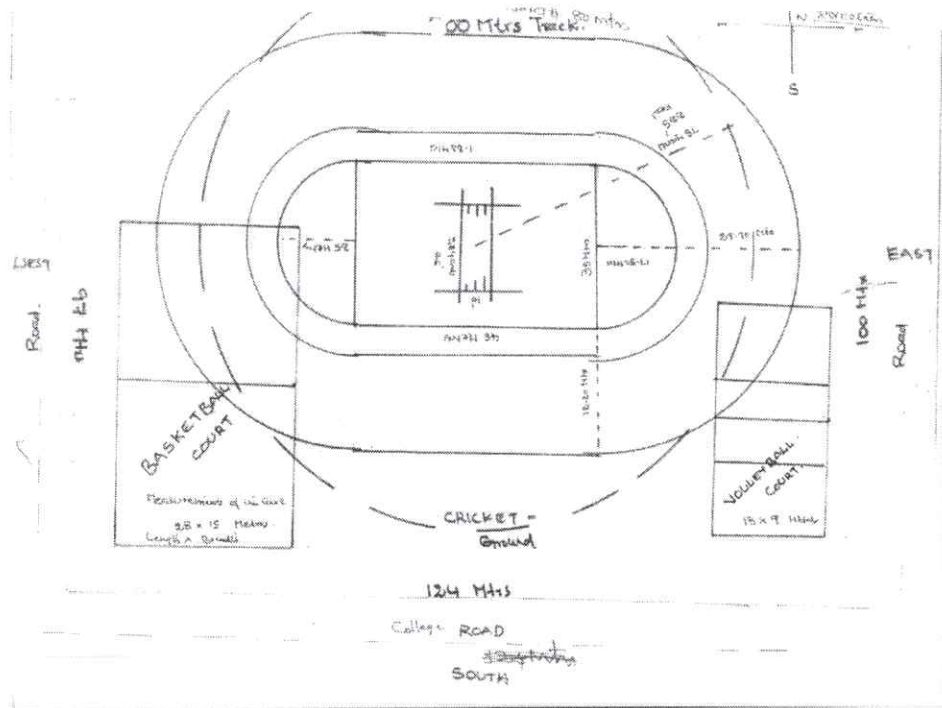
SRI VENKATESWARA COLLEGE OF ENGINEERING & TECHNOLOGY

ISO 9001:2015 Certified

Approved by AICTE, New Delhi, Affiliated to JNTUGV, Vizianagaram

Office : +91 9705576693 , email: principal_svcet@yahoo.com, website: www.svcet.info

Sports and gym facilities



GROUND PLAN

4

PRINCIPAL
Sri Venkateswara College of Engineering & Technology
ETCHERLA, Srikakulam-532410 (A.P)



SRI VENKATESWARA COLLEGE OF ENGINEERING & TECHNOLOGY

ISO 9001:2015 Certified

Approved by AICTE, New Delhi, Affiliated to JNTUGV, Vizianagaram

Office : +91 9705576693 , email: principal_svcet@yahoo.com, website: www.svcet.info

OUT DOOR GAMES



Kabaddi



Kho kho



Cricket



Volley ball


PRINCIPAL
Sri Venkateswara College of Engineering & Technology
ETCHERLA, Srikakulam-532410 (A.P)



SRI VENKATESWARA COLLEGE OF ENGINEERING & TECHNOLOGY

ISO 9001:2015 Certified

Approved by AICTE, New Delhi, Affiliated to JNTUGV, Vizianagaram
Office : +91 9705576693 . email: principal_svcet@yahoo.com, website: www.svcet.info



Indoor games



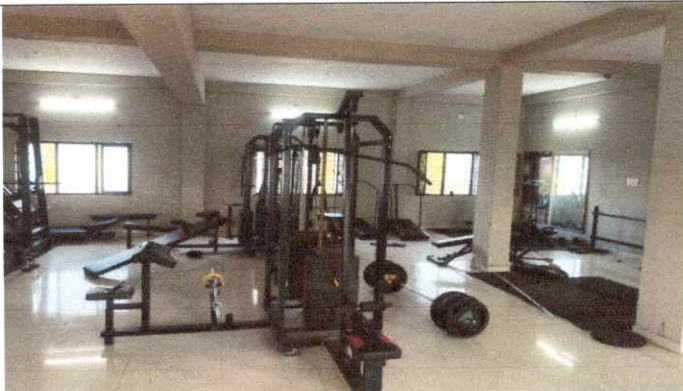
Shuttle court



Chess



GYM



GYM


PRINCIPAL
Sri Venkateswara College of Engineering & Technology
ETCHERLA, Srikakulam-532410 (A.P)



SRI VENKATESWARA COLLEGE OF ENGINEERING & TECHNOLOGY

ISO 9001:2015 Certified

Approved by AICTE, New Delhi, Affiliated to JNTUGV, Vizianagaram

Office : +91 9705576693 , email: principal_svcet@yahoo.com, website: www.svcet.info



TRANSPORT FACILITIES



PRINCIPAL

Sri Venkateswara College of Engineering & Technology
ETCHERLA, Srikakulam-532410 (A.P)



SRI VENKATESWARA COLLEGE OF ENGINEERING & TECHNOLOGY

ISO 9001:2015 Certified

Approved by AICTE, New Delhi, Affiliated to JNTUGV, Vizianagaram

Office : +91 9705576693 , email: principal_svcet@yahoo.com, website: www.svcet.info

CANTEEN



PRINCIPAL
Sri Venkateswara College of Engineering & Technology
ETCHERLA, Srikakulam-532410 (A.P)



SRI VENKATESWARA COLLEGE OF ENGINEERING & TECHNOLOGY

ISO 9001:2015 Certified

Approved by AICTE, New Delhi, Affiliated to JNTUGV, Vizianagaram

Office : +91 9705576693 , email: principal_svcet@yahoo.com, website: www.svcet.info

BOYS HOSTEL



SRI VENKATESWARA COLLEGE OF ENGINEERING & TECHNOLOGY

ISO 9001:2015 Certified

Approved by AICTE, New Delhi, Affiliated to JNTUGV, Vizianagaram

Office : +91 9705576693 . email: principal_svcet@yahoo.com, website: www.svcet.info



BOYS HOSTEL



PRINCIPAL

**Sri Venkateswara College of Engineering & Technology;
ETCHERLA, Srikakulam-532410 (A.P)**



SRI VENKATESWARA COLLEGE OF ENGINEERING & TECHNOLOGY

ISO 9001:2015 Certified

Approved by AICTE, New Delhi, Affiliated to JNTUGV, Vizianagaram

Office : +91 9705576693 , email: principal_svcet@yahoo.com, website: www.svcet.info

GIRLS HOSTEL



SRI VENKATESWARA COLLEGE OF ENGINEERING & TECHNOLOGY

ISO 9001:2015 Certified

Approved by AICTE, New Delhi, Affiliated to JNTUGV, Vizianagaram

Office : +91 9705576693 , email: principal_svcet@yahoo.com, website: www.svcet.info



GIRLS HOSTEL




PRINCIPAL
Sri Venkateswara College of Engineering & Technology
ETCHERLA, Srikakulam-532410 (A.P)

